



## THE ATLANTIC at VERONA OCEANSIDE

THE ATLANTIC - COASTAL

MOVE IN READY

**4 Bedrooms • 3 Bathrooms • 2-Car Garage • 2,720 ft<sup>2</sup> Living Area • 3,911 ft<sup>2</sup> Under Roof**

The Atlantic is the first new floor plan created to encourage a close-knit community and a casual lifestyle. An expansive living room/kitchen area creates the heart of the home. Views from the covered lanai greet you as soon as you walk in through the foyer. The lanai is flanked on one side by the private master bedroom with spacious master bath.

\* Renderings may vary from actual home. Please see disclaimer for more details.

**\$2,649**

**ESTIMATED SAVINGS**



This home has a HERS Score of 56 and is estimated to save you \$2,649 on your annual utility bills vs. a resale home.

# THE ATLANTIC

4 Bedrooms • 3 Bathrooms • 2-Car Garage

MOVE IN READY

## Verona Oceanside

Pinnacle Series | 80' Wide Lots - Lot 023

41 Marden Drive  
Ormond Beach, FL, 32176

Living Area: 2,720 ft<sup>2</sup>

### Structural Options Included in This Home:

- ✓ Custom Game Rm w 4th Bedroom
- ✓ Kitchen Deluxe Deluxe Kitchen Includes - Cooktop ilo of freestanding range, single wall oven, upgraded microwave over cooktop, upgr
- ✓ Window Addition
- ✓ Study ilo Flex Room
- ✓ Summer Kitchen Rough In w/o Hood Includes: -Concrete block wall 56" high along with 48 wing wall (may vary per
- ✓ Sliding Glass Door Additional
- ✓ Hidden Pantry
- ✓ Tray Ceiling - Living Room
- ✓ Tray Ceiling - Master Suite
- ✓ Outlet-Floor/Brass Cover
- ✓ Laundry Sink-Rough In
- ✓ Modify width of Living, Dining, Study, Front Entry, Lanai and Secondary Bedrooms
- ✓ Reconfigure Secondary Bedrooms including Closets
- ✓ Custom Game Room/Bed 4 with Slider

And much more....

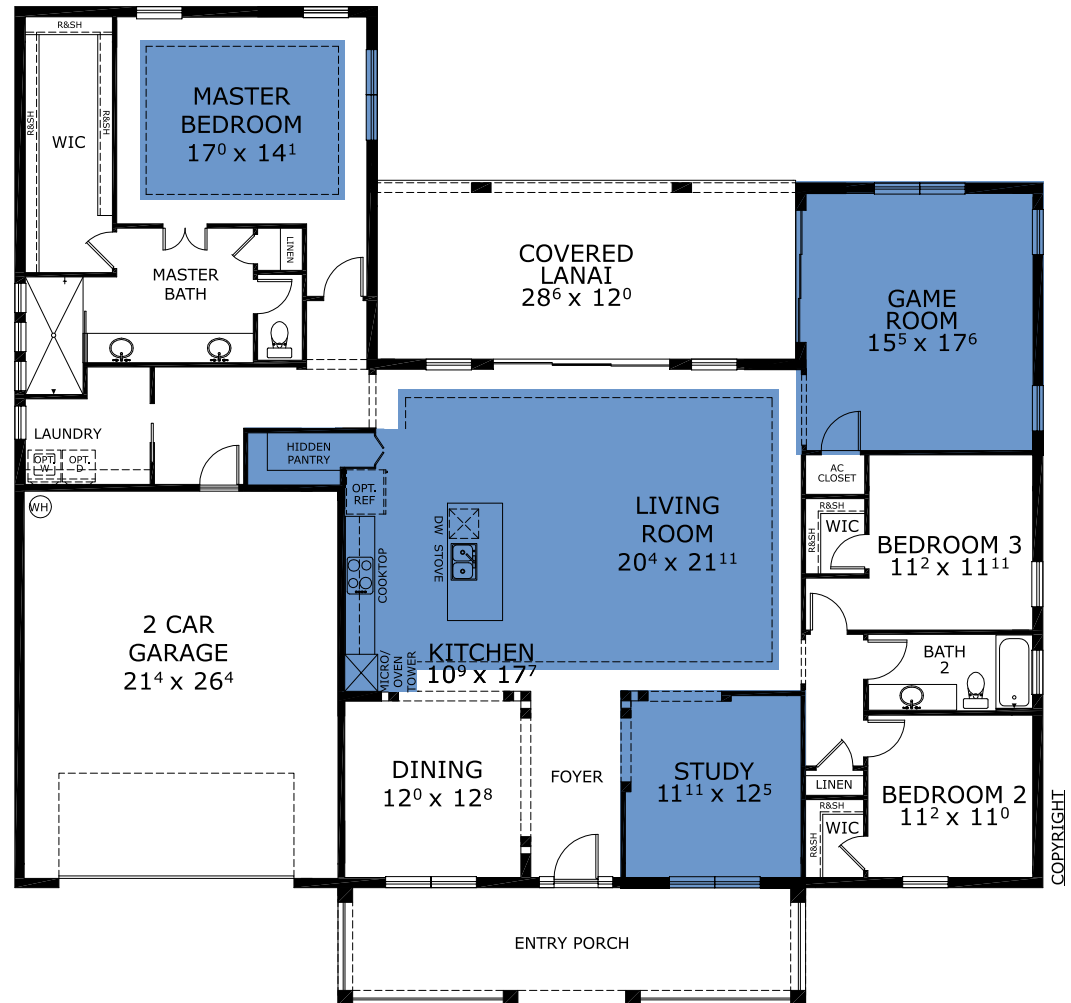
**Priced at: \$899,900**

Floor Plan Comparison Tool

Close

This Atlantic is a Move In Ready! [Speak to a Sales Counselor \(844\) 349-6401](#) or visit [ICIHomes.com](#)

## FIRST FLOOR



include lot premiums, upgrades, and options. Inventory home completion date may vary. All prices subject to change without notice. All plans are property of ICI Homes and cannot be copied or used without permission. Prices, promotions, incentives, features, options, amenities, floor plans, elevations, site maps, designs, materials, and dimensions are for illustrative purposes only and subject to change without notice. Plans should not be relied upon as representation express or implied of final sizes, locations, features or dimensions. Square footage and dimensions are estimated and may vary from description. All HERS ratings and savings are calculated by a third party energy rating service. Actual savings will depend on a number of factors, including but not limited to daily activities, home maintenance practices, household size, use of appliances, lighting and internal climate control systems, lot orientation, and surrounding climate and weather conditions. **Created on 01/28/2026:** \_\_\_\_\_ **Garage Orientation R / L:** \_\_\_\_\_

