



THE AZALEA at PERSIMMON PARK

THE AZALEA - COASTAL MODERN

4 Bedrooms • 3.5 Bathrooms • 2-Car Garage • 2,748 ft² Living Area • 3,524 ft² Under Roof

The Azalea is designed for both relaxation and entertainment. Enter through a grand foyer that flows into a bright, open living space with high ceilings and a seamless connection to a covered lanai. The chef-inspired kitchen overlooks a cozy dining area and spacious living room, perfect for gatherings. Downstairs, a serene primary suite offers a private retreat, while upstairs, three more bedrooms surround a lively game room. With ICI Homes' customization options, the Azalea can be tailored to your needs—move walls, expand spaces, and make it uniquely yours. Embrace a home that evolves with your dreams.

* Renderings may vary from actual home. Please see disclaimer for more details.

\$3,024

ESTIMATED SAVINGS



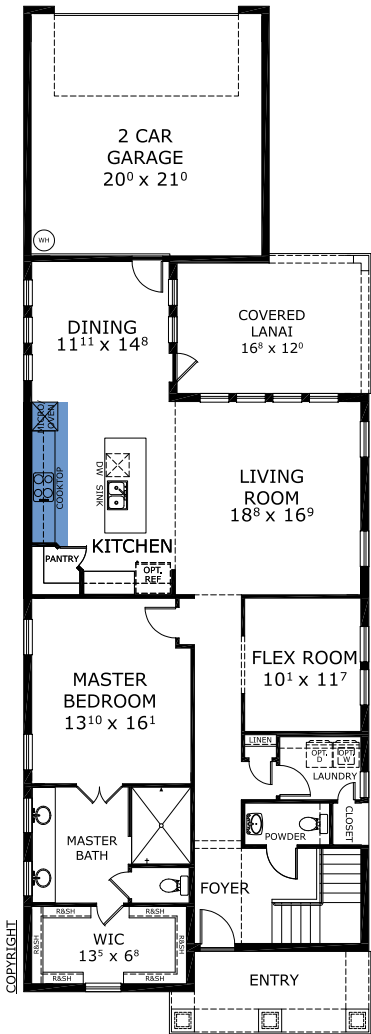
This home has a HERS Score of 58 and is estimated to save you \$3,024 on your annual utility bills vs. a resale home.

THE AZALEA

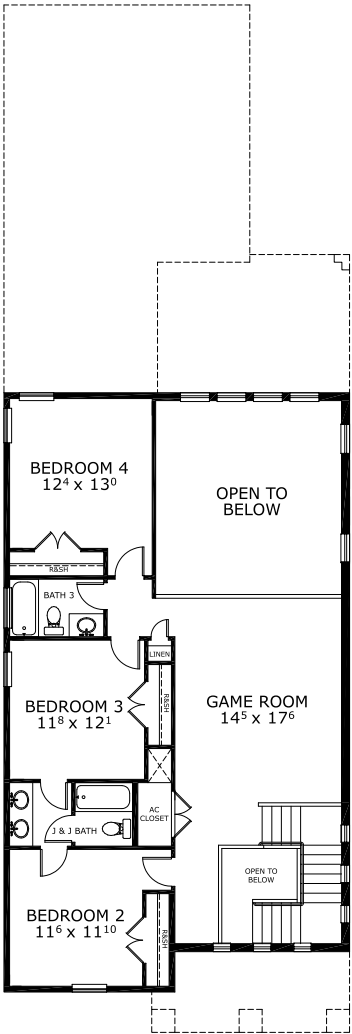
4 Bedrooms • 3.5 Bathrooms • 2-Car Garage

Persimmon Park Available in
Wesley Chapel, FL Persimmon Park

Living Area: 2,748 ft² Under Roof: 3,524 ft²



FIRST-SECOND FLOOR



Floor Plan Comparison Tool

Close

Customize this plan, it's easy! (844) 349-6401 or visit [ICIHomes.com](https://www.icihomes.com)

include lot premiums, upgrades, and options. Inventory home completion date may vary. All prices subject to change without notice. All plans are property of ICI Homes and cannot be copied or used without permission. Prices, promotions, incentives, features, options, amenities, floor plans, elevations, site maps, designs, materials, and dimensions are for illustrative purposes only and subject to change without notice. Plans should not be relied upon as representation express or implied of final sizes, locations, features or dimensions. Square footage and dimensions are estimated and may vary from description. All HERS ratings and savings are calculated by a third party energy rating service. Actual savings will depend on a number of factors, including but not limited to daily activities, home maintenance practices, household size, use of appliances, lighting and internal climate control systems, lot orientation, and surrounding climate and weather conditions. **Created on 01/28/2026:** _____ **Garage Orientation R / L:** _____

