



## THE BARTRAM - B at NOCATEE

## THE BARTRAM - FARMHOUSE

**3 Bedrooms • 2.5 Bathrooms • 2-Car Garage • 1,848 ft<sup>2</sup> Living Area • 2,348 ft<sup>2</sup> Under Roof**

The Bartram townhome offers 1,848 sq. ft. of bright, functional living space. The open main floor boasts a spacious living area, stylish kitchen with a central island, and a cozy dining area—perfect for entertaining or family time. Upstairs, relax in a serene master suite with an en-suite bath and walk-in closet. Two additional bedrooms, a shared bath, and a flexible loft space provide ample room for family or guests. With a laundry room conveniently on the second floor and an attached two-car garage, the Bartram blends style, comfort, and ease for modern Florida living.

\* Renderings may vary from actual home. Please see disclaimer for more details.

# \$2,148

**ESTIMATED SAVINGS**



This home has a HERS Score of 55 and is estimated to save you \$2,148 on your annual utility bills vs. a resale home.

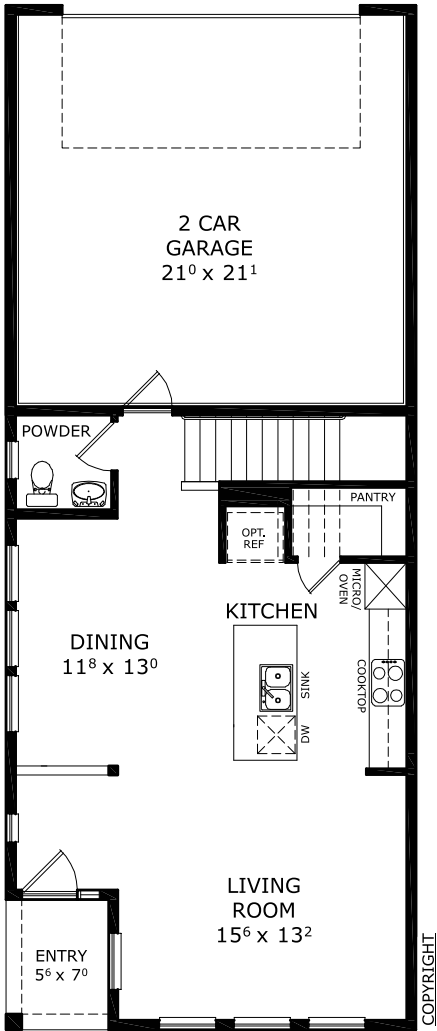
# THE BARTRAM - B

3 Bedrooms • 2.5 Bathrooms • 2-Car Garage

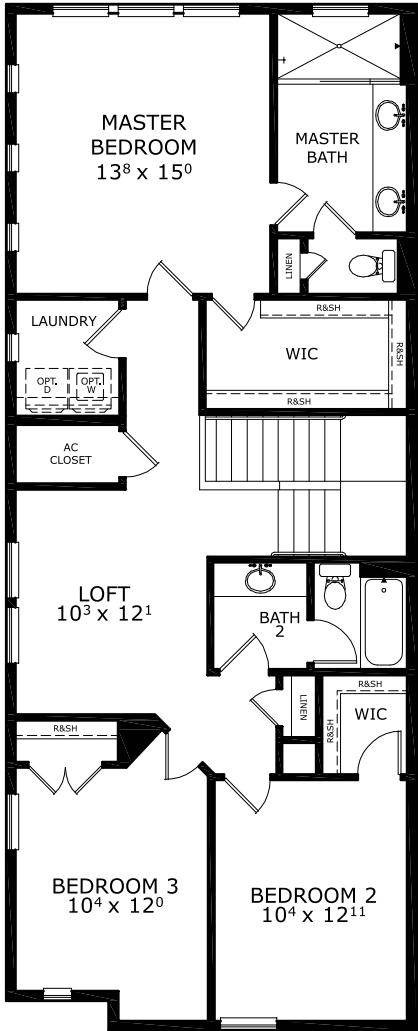
**Nocatee**  
Ponte Vedra, FL

**Available in**  
West End Townhomes

**Living Area:** 1,848 ft<sup>2</sup> **Under Roof:** 2,348 ft<sup>2</sup>



## FIRST-SECOND FLOOR



Floor Plan Comparison Tool

Close

No Maintenance Townhomes! [Speak to a Sales Counselor \(844\) 349-6401](#) or visit [ICIHomes.com](#)

include lot premiums, upgrades, and options. Inventory home completion date may vary. All prices subject to change without notice. All plans are property of ICI Homes and cannot be copied or used without permission. Prices, promotions, incentives, features, options, amenities, floor plans, elevations, site maps, designs, materials, and dimensions are for illustrative purposes only and subject to change without notice. Plans should not be relied upon as representation express or implied of final sizes, locations, features or dimensions. Square footage and dimensions are estimated and may vary from description. All HERS ratings and savings are calculated by a third party energy rating service. Actual savings will depend on a number of factors, including but not limited to daily activities, home maintenance practices, household size, use of appliances, lighting and internal climate control systems, lot orientation, and surrounding climate and weather conditions. **Created on 01/28/2026:** \_\_\_\_\_ **Garage Orientation R / L:** \_\_\_\_\_

