



THE BORA BORA at OAKMONT

THE COASTAL

4 Bedrooms • 3 Bathrooms • 2-Car Garage • 2,968 ft² Living Area • 3,778 ft² Under Roof

The Bora Bora is a 2,968 sq. ft. home featuring 4 bedrooms, 3 bathrooms, and a breathtaking two-story living room. The open layout includes a gourmet kitchen with a large island, a dining room with courtyard views, and a covered lanai for outdoor relaxation. The upstairs master suite is a private retreat with a spa-inspired bathroom, while Bedrooms 2 and 3 share a balcony, adding charm to the upper level. With a detached two-car garage and ICI Homes' custom options, the Bora Bora is designed for comfort, style, and personalization, making it a home that's uniquely yours.

* Renderings may vary from actual home. Please see disclaimer for more details.

\$3,530

ESTIMATED SAVINGS



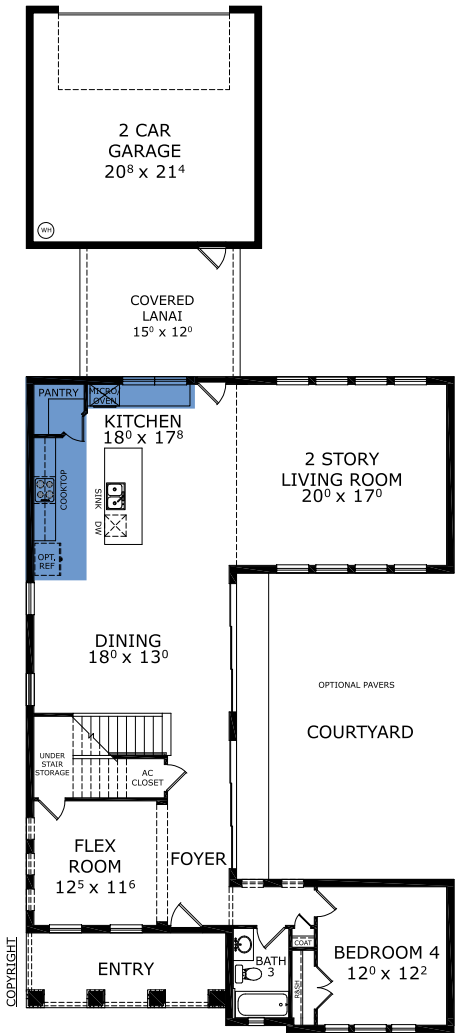
This home has a HERS Score of 62 and is estimated to save you \$3,530 on your annual utility bills vs. a resale home.

THE BORA BORA

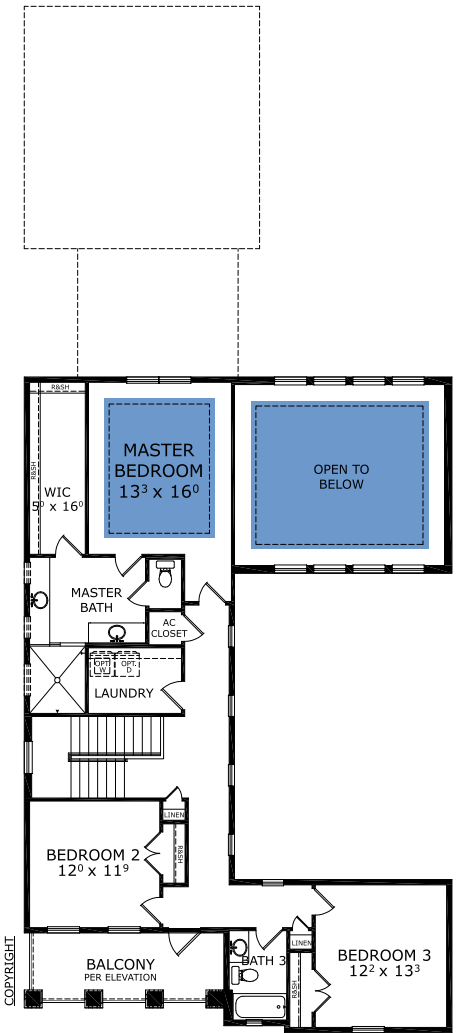
4 Bedrooms • 3 Bathrooms • 2-Car Garage

Oakmont Available in
Gainesville, FL Oakmont 50 RL

Living Area: 2,968 ft² Under Roof: 3,778 ft²



FIRST-SECOND FLOOR



Floor Plan Comparison Tool

Close

Customize this plan, it's easy! (844) 349-6401 or visit [ICIHomes.com](https://www.icihomes.com)

include lot premiums, upgrades, and options. Inventory home completion date may vary. All prices subject to change without notice. All plans are property of ICI Homes and cannot be copied or used without permission. Prices, promotions, incentives, features, options, amenities, floor plans, elevations, site maps, designs, materials, and dimensions are for illustrative purposes only and subject to change without notice. Plans should not be relied upon as representation express or implied of final sizes, locations, features or dimensions. Square footage and dimensions are estimated and may vary from description. All HERS ratings and savings are calculated by a third party energy rating service. Actual savings will depend on a number of factors, including but not limited to daily activities, home maintenance practices, household size, use of appliances, lighting and internal climate control systems, lot orientation, and surrounding climate and weather conditions. **Created on 01/28/2026:** _____ **Garage Orientation R / L:** _____

