



## THE CAROLINE at SEVEN PINES

THE CAROLINE - COASTAL

**4 Bedrooms • 3 Bathrooms • 3-Car Garage • 2,876 ft<sup>2</sup> Living Area • 3,895 ft<sup>2</sup> Under Roof**

The Caroline is a 2,876 sq. ft. home that blends elegance and functionality with 4 bedrooms, 3 bathrooms, and a three-car garage. The open-concept living area includes a gourmet kitchen with a large island, a cozy nook, and a spacious living room that flows seamlessly to a covered lanai for outdoor enjoyment. The master suite, located at the back of the home, offers privacy and luxury with dual walk-in closets and a spa-inspired bath. Three additional bedrooms provide comfort for family and guests. With ICI Homes' customization options, the Caroline adapts beautifully to your lifestyle.

\* Renderings may vary from actual home. Please see disclaimer for more details.

**\$2,864**

**ESTIMATED SAVINGS**



This home has a HERS Score of 61 and is estimated to save you \$2,864 on your annual utility bills vs. a resale home.

# THE CAROLINE

4 Bedrooms • 3 Bathrooms • 3-Car Garage

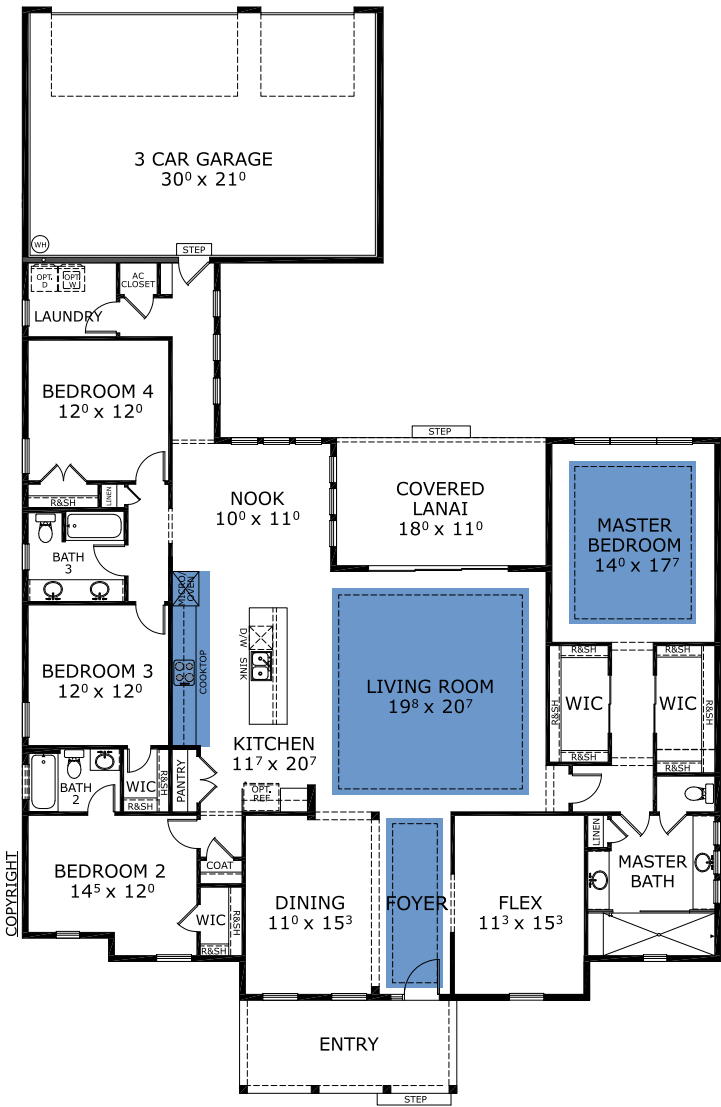
Seven Pines  
Jacksonville, FL

Available in  
Seven Pines 70 RL

Living Area: 2,876 ft<sup>2</sup> Under Roof: 3,895 ft<sup>2</sup>



## FIRST FLOOR



Floor Plan Comparison Tool

Close

Customize this plan, it's easy! (844) 349-6401 or visit [ICIHomes.com](https://www.ICHomes.com)

include lot premiums, upgrades, and options. Inventory home completion date may vary. All prices subject to change without notice. All plans are property of ICI Homes and cannot be copied or used without permission. Prices, promotions, incentives, features, options, amenities, floor plans, elevations, site maps, designs, materials, and dimensions are for illustrative purposes only and subject to change without notice. Plans should not be relied upon as representation express or implied of final sizes, locations, features or dimensions. Square footage and dimensions are estimated and may vary from description. All HERS ratings and savings are calculated by a third party energy rating service. Actual savings will depend on a number of factors, including but not limited to daily activities, home maintenance practices, household size, use of appliances, lighting and internal climate control systems, lot orientation, and surrounding climate and weather conditions. **Created on 01/28/2026:** \_\_\_\_\_ **Garage Orientation R / L:** \_\_\_\_\_

