



THE CHARLOTTE at NOCATEE

THE CHARLOTTE - COASTAL MODERN

3 Bedrooms • 2 Bathrooms • 2-Car Garage • 1,872 ft² Living Area • 2,557 ft² Under Roof

Step into the Charlotte, a 3-bedroom, 2-bath open floor plan that combines elegance and functionality. The gourmet kitchen with a large island flows into the dining and living areas. Sliding doors lead to a covered lanai, perfect for outdoor relaxation. The primary suite offers a serene retreat with a luxurious bath and spacious walk-in closet. With customization options from ICI Homes, like a deluxe kitchen or extended lanai, the Charlotte is designed to suit your unique lifestyle—perfect for both entertaining and everyday living.

* Renderings may vary from actual home. Please see disclaimer for more details.

\$2,178

ESTIMATED SAVINGS



This home has a HERS Score of 55 and is estimated to save you \$2,178 on your annual utility bills vs. a resale home.

THE CHARLOTTE

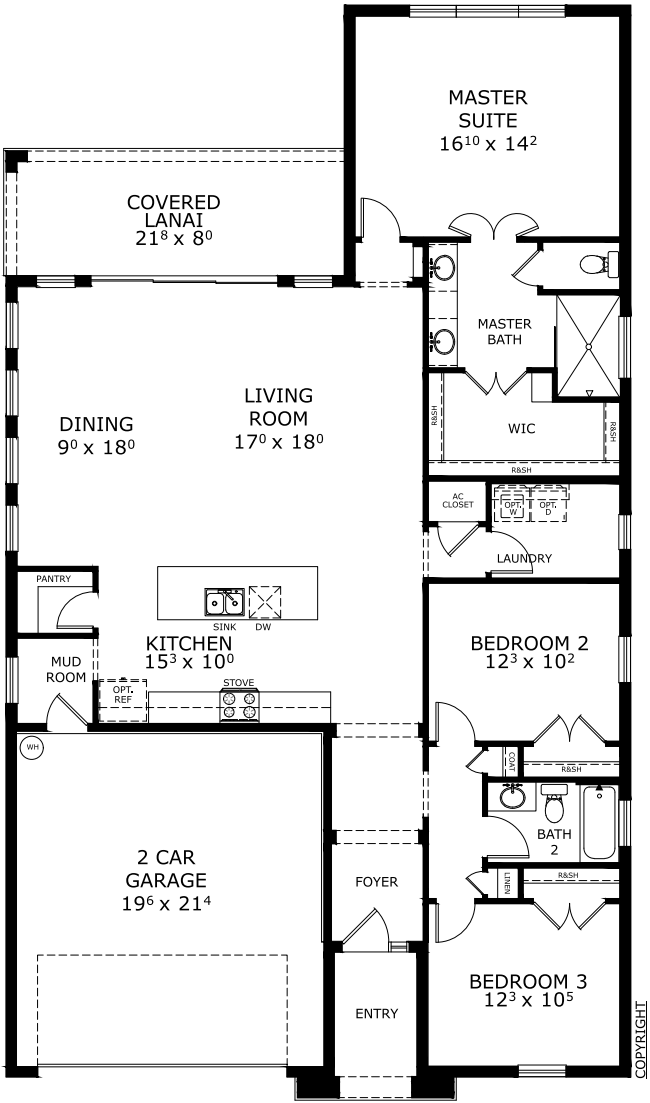
3 Bedrooms • 2 Bathrooms • 2-Car Garage

Nocatee	Available in
Ponte Vedra, FL	Seabrook 50

Living Area: 1,872 ft² Under Roof: 2,557 ft²



FIRST FLOOR



Floor Plan Comparison Tool

Close

Customize this plan, it's easy! (844) 349-6401 or visit [ICIHomes.com](https://www.ICHomes.com)

include lot premiums, upgrades, and options. Inventory home completion date may vary. All prices subject to change without notice. All plans are property of ICI Homes and cannot be copied or used without permission. Prices, promotions, incentives, features, options, amenities, floor plans, elevations, site maps, designs, materials, and dimensions are for illustrative purposes only and subject to change without notice. Plans should not be relied upon as representation express or implied of final sizes, locations, features or dimensions. Square footage and dimensions are estimated and may vary from description. All HERS ratings and savings are calculated by a third party energy rating service. Actual savings will depend on a number of factors, including but not limited to daily activities, home maintenance practices, household size, use of appliances, lighting and internal climate control systems, lot orientation, and surrounding climate and weather conditions. **Created on 01/28/2026:** _____ **Garage Orientation R / L:** _____

