



## THE CHARLOTTE at OAKMONT

THE CHARLOTTE - COASTAL MODERN

**3 Bedrooms • 2 Bathrooms • 2-Car Garage • 1,872 ft<sup>2</sup> Living Area • 2,557 ft<sup>2</sup> Under Roof**

Step into the Charlotte, a 3-bedroom, 2-bath open floor plan that combines elegance and functionality. The gourmet kitchen with a large island flows into the dining and living areas. Sliding doors lead to a covered lanai, perfect for outdoor relaxation. The primary suite offers a serene retreat with a luxurious bath and spacious walk-in closet. With customization options from ICI Homes, like a deluxe kitchen or extended lanai, the Charlotte is designed to suit your unique lifestyle—perfect for both entertaining and everyday living.

\* Renderings may vary from actual home. Please see disclaimer for more details.

**\$2,178**

**ESTIMATED SAVINGS**



This home has a HERS Score of 55 and is estimated to save you \$2,178 on your annual utility bills vs. a resale home.



# THE CHARLOTTE

3 Bedrooms • 2 Bathrooms • 2-Car Garage

**Oakmont**  
Gainesville, FL

**Available in**  
Oakmont 50

**Living Area:** 1,872 ft<sup>2</sup> **Under Roof:** 2,557 ft<sup>2</sup>

THE FLORIDA TRADITIONAL - SIDING



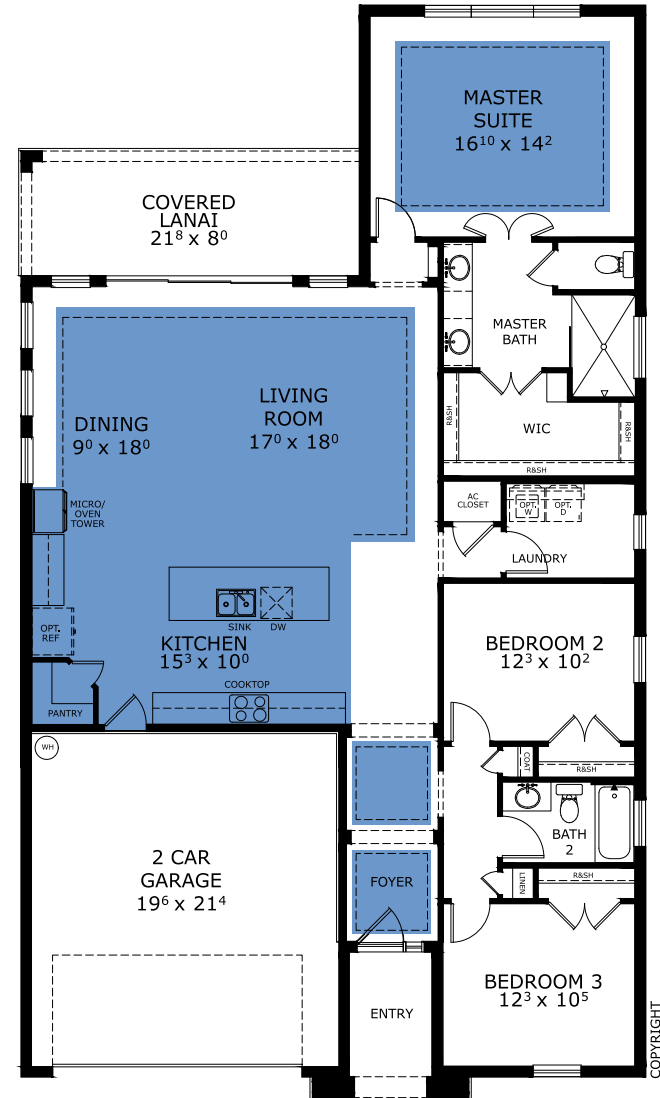
THE FARMHOUSE MODERN



THE CRAFTSMAN MODERN



## FIRST FLOOR



Floor Plan Comparison Tool

Close

[Customize this plan, it's easy!](#) (844) 349-6401 or visit [ICIHomes.com](#)

include lot premiums, upgrades, and options. Inventory home completion date may vary. All prices subject to change without notice. All plans are property of ICI Homes and cannot be copied or used without permission. Prices, promotions, incentives, features, options, amenities, floor plans, elevations, site maps, designs, materials, and dimensions are for illustrative purposes only and subject to change without notice. Plans should not be relied upon as representation express or implied of final sizes, locations, features or dimensions. Square footage and dimensions are estimated and may vary from description. All HERS ratings and savings are calculated by a third party energy rating service. Actual savings will depend on a number of factors, including but not limited to daily activities, home maintenance practices, household size, use of appliances, lighting and internal climate control systems, lot orientation, and surrounding climate and weather conditions. **Created on 01/28/2026:** \_\_\_\_\_ **Garage Orientation R / L:** \_\_\_\_\_

