



THE CAMERON at VOLUSIA/FLAGLER OFFSITE

THE CAMERON - FRENCH COUNTRY

3 Bedrooms • 2 Bathrooms • 3-Car Garage • 2,624 ft² Living Area • 3,628 ft² Under Roof

The Cameron is a 2,624 sq. ft. home that blends style and functionality. With 3 bedrooms, 2 baths, and a three-car garage, this single-story layout offers open living areas and private retreats. The deluxe kitchen flows into a spacious living room and a bright sunroom, ideal for relaxing or entertaining. The master suite is a private retreat with a spa-inspired bath and a walk-in closet. Bedrooms 2 and 3 share a full bath, offering comfort for family or guests. With ICI Homes' customization options, the Cameron can be tailored to suit your lifestyle perfectly.

* Renderings may vary from actual home. Please see disclaimer for more details.

\$2,458

ESTIMATED SAVINGS



This home has a HERS Score of 64 and is estimated to save you \$2,458 on your annual utility bills vs. a resale home.

THE CAMERON

3 Bedrooms • 2 Bathrooms • 3-Car Garage

Volusia/Flagler

Offsite

Ormond Beach, FL

Available in

Volusia Flagler On Your Lot

Living Area: 2,624 ft² Under Roof: 3,628 ft²

THE MEDITERRANEAN II



THE MEDITERRANEAN



THE MODERN



THE TUSCAN



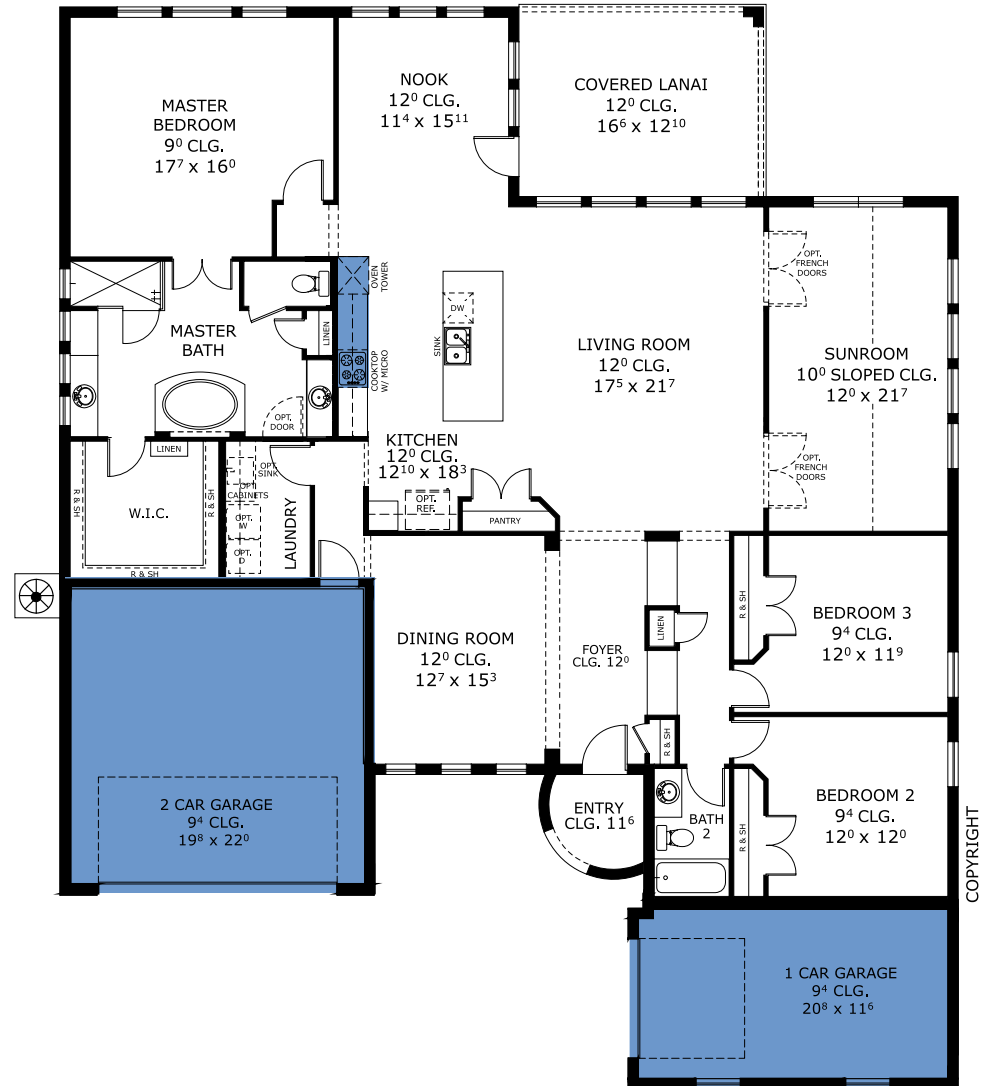
THE CRAFTSMAN



THE FARMHOUSE



FIRST FLOOR



COPYRIGHT

Floor Plan Comparison Tool

Close

Customize this plan, it's easy! (844) 349-6401 or visit ICIHomes.com

include lot premiums, upgrades, and options. Inventory home completion date may vary. All prices subject to change without notice. All plans are property of ICI Homes and cannot be copied or used without permission. Prices, promotions, incentives, features, options, amenities, floor plans, elevations, site maps, designs, materials, and dimensions are for illustrative purposes only and subject to change without notice. Plans should not be relied upon as representation express or implied of final sizes, locations, features or dimensions. Square footage and dimensions are estimated and may vary from description. All HERS ratings and savings are calculated by a third party energy rating service. Actual savings will depend on a number of factors, including but not limited to daily activities, home maintenance practices, household size, use of appliances, lighting and internal climate control systems, lot orientation, and surrounding climate and weather conditions. **Created on 01/28/2026:** _____ **Garage Orientation R / L:** _____

