



## THE DAVENPORT at WELLEN PARK

THE DAVENPORT - PRAIRIE MODERN

**4 Bedrooms • 3 Bathrooms • 3-Car Garage • 2,537 ft<sup>2</sup> Living Area • 3,462 ft<sup>2</sup> Under Roof**

The Davenport is a spacious 2,588-square-foot, four-bedroom, three-bath home designed for comfort and style. Its open-concept kitchen, dining, and living areas create an inviting space perfect for gatherings, with large sliding doors leading to a covered lanai that extends your living space outdoors. The private master suite offers a luxurious retreat with tray ceilings, a walk-in closet, and a spa-inspired bath. Three additional bedrooms are situated at the front, providing a flexible layout. With ICI Homes' customization options, the Davenport can be tailored to fit your unique lifestyle and needs beautifully.

\* Renderings may vary from actual home. Please see disclaimer for more details.

**\$2,531**

**ESTIMATED SAVINGS**



This home has a HERS Score of 56 and is estimated to save you \$2,531 on your annual utility bills vs. a resale home.

# THE DAVENPORT

4 Bedrooms • 3 Bathrooms • 3-Car Garage

Wellen Park  
Venice, FL

Available in  
Wellen Park 60

Living Area: 2,537 ft<sup>2</sup> Under Roof: 3,462 ft<sup>2</sup>

THE WEST INDIES

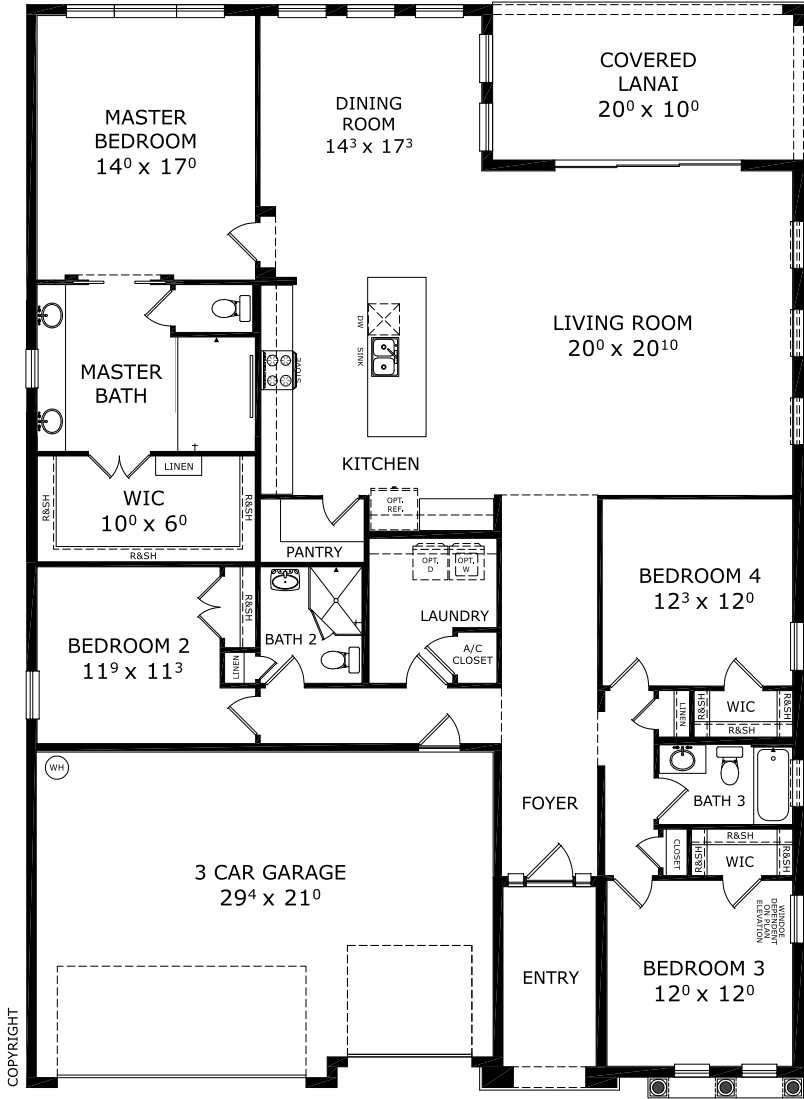
THE COASTAL



THE FARMHOUSE MODERN



## FIRST FLOOR



Floor Plan Comparison Tool

Close

Customize this plan, it's easy! (844) 349-6401 or visit [ICIHomes.com](https://www.ICIHomes.com)

include lot premiums, upgrades, and options. Inventory home completion date may vary. All prices subject to change without notice. All plans are property of ICI Homes and cannot be copied or used without permission. Prices, promotions, incentives, features, options, amenities, floor plans, elevations, site maps, designs, materials, and dimensions are for illustrative purposes only and subject to change without notice. Plans should not be relied upon as representation express or implied of final sizes, locations, features or dimensions. Square footage and dimensions are estimated and may vary from description. All HERS ratings and savings are calculated by a third party energy rating service. Actual savings will depend on a number of factors, including but not limited to daily activities, home maintenance practices, household size, use of appliances, lighting and internal climate control systems, lot orientation, and surrounding climate and weather conditions. **Created on 01/28/2026:** \_\_\_\_\_ **Garage Orientation R / L:** \_\_\_\_\_

