



## THE DELEON - D at NOCATEE

## THE DELEON - FARMHOUSE

**3 Bedrooms • 2.5 Bathrooms • 2-Car Garage • 1,635 ft<sup>2</sup> Living Area • 2,241 ft<sup>2</sup> Under Roof**

The Deleon is a thoughtfully designed 1,635-square-foot home that offers three bedrooms, two and a half baths, and a two-car garage. The first floor features an open layout, where the living room flows into the kitchen and dining area, perfect for casual gatherings and everyday life. Upstairs, the master suite is a private retreat with a walk-in closet, elegant bath, and a covered balcony for added relaxation. Two additional bedrooms, a shared bath, and a flexible loft space complete the second floor. With customizable options, the Deleon is a charming and functional home that adapts to your lifestyle.

\* Renderings may vary from actual home. Please see disclaimer for more details.

# \$2,522

**ESTIMATED SAVINGS**



This home has a HERS Score of 56 and is estimated to save you \$2,522 on your annual utility bills vs. a resale home.

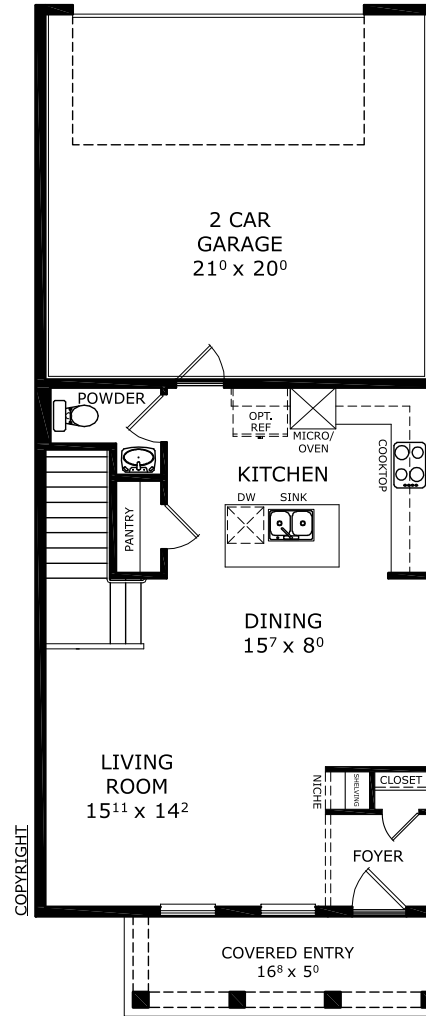
# THE DELEON - D

3 Bedrooms • 2.5 Bathrooms • 2-Car Garage

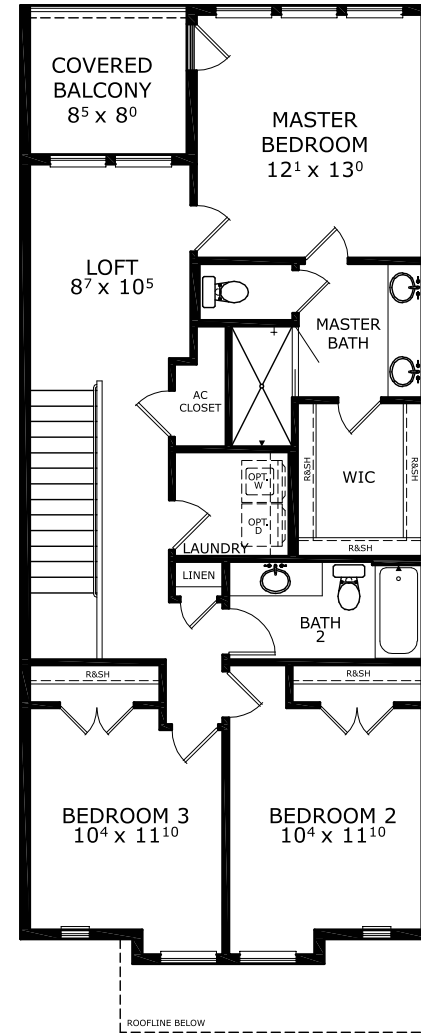
**Nocatee** Available in  
Ponte Vedra, FL West End Townhomes

**Living Area:** 1,635 ft<sup>2</sup> **Under Roof:** 2,241 ft<sup>2</sup>

THE WEST INDIES



## FIRST-SECOND FLOOR



Floor Plan Comparison Tool

Close

No Maintenance Townhomes! [Speak to a Sales Counselor \(844\) 349-6401](#) or visit [ICIHomes.com](#)

include lot premiums, upgrades, and options. Inventory home completion date may vary. All prices subject to change without notice. All plans are property of ICI Homes and cannot be copied or used without permission. Prices, promotions, incentives, features, options, amenities, floor plans, elevations, site maps, designs, materials, and dimensions are for illustrative purposes only and subject to change without notice. Plans should not be relied upon as representation express or implied of final sizes, locations, features or dimensions. Square footage and dimensions are estimated and may vary from description. All HERS ratings and savings are calculated by a third party energy rating service. Actual savings will depend on a number of factors, including but not limited to daily activities, home maintenance practices, household size, use of appliances, lighting and internal climate control systems, lot orientation, and surrounding climate and weather conditions. **Created on 01/28/2026:** \_\_\_\_\_ **Garage Orientation R / L:** \_\_\_\_\_

