



THE DELEON - D at NOCATEE

THE DELEON - FARMHOUSE

BEING BUILT

3 Bedrooms • 2.5 Bathrooms • 2-Car Garage • 1,635 ft² Living Area • 2,241 ft² Under Roof

The Deleon is a thoughtfully designed 1,635-square-foot home that offers three bedrooms, two and a half baths, and a two-car garage. The first floor features an open layout, where the living room flows into the kitchen and dining area, perfect for casual gatherings and everyday life. Upstairs, the master suite is a private retreat with a walk-in closet, elegant bath, and a covered balcony for added relaxation. Two additional bedrooms, a shared bath, and a flexible loft space complete the second floor. With customizable options, the Deleon is a charming and functional home that adapts to your lifestyle.

* Renderings may vary from actual home. Please see disclaimer for more details.

\$2,522

ESTIMATED SAVINGS



This home has a HERS Score of 56 and is estimated to save you \$2,522 on your annual utility bills vs. a resale home.

THE DELEON - D

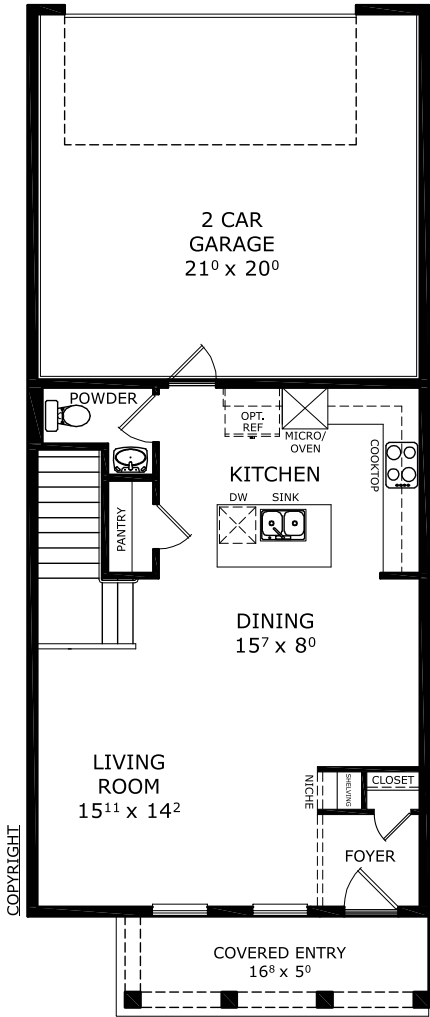
3 Bedrooms • 2.5 Bathrooms • 2-Car Garage

BEING BUILT

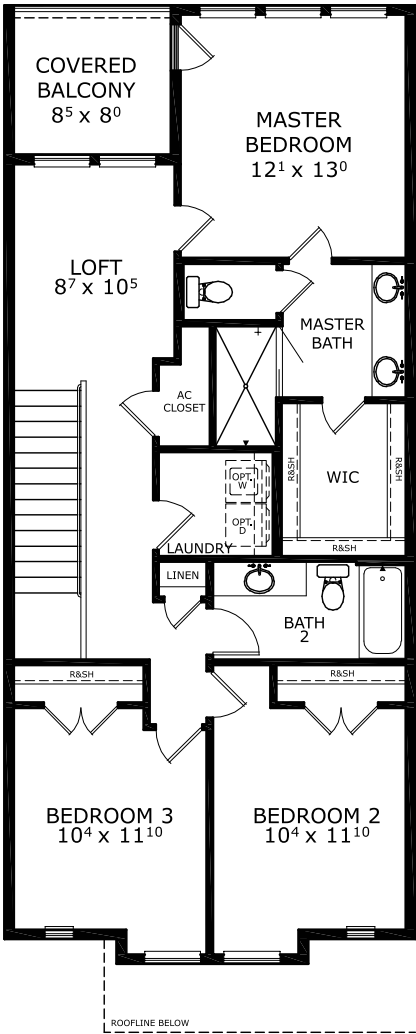
Nocatee
Townhome Series | West End - Lot 101
30 Islington Lane
Ponte Vedra, FL, 32081

Living Area: 1,635 ft²

Priced at: **\$527,635**



FIRST-SECOND FLOOR



Floor Plan Comparison Tool

Close

This Deleon - D is a Being Built! [Speak to a Sales Counselor \(844\) 349-6401](#) or visit [ICIHomes.com](#)

include lot premiums, upgrades, and options. Inventory home completion date may vary. All prices subject to change without notice. All plans are property of ICI Homes and cannot be copied or used without permission. Prices, promotions, incentives, features, options, amenities, floor plans, elevations, site maps, designs, materials, and dimensions are for illustrative purposes only and subject to change without notice. Plans should not be relied upon as representation express or implied of final sizes, locations, features or dimensions. Square footage and dimensions are estimated and may vary from description. All HERS ratings and savings are calculated by a third party energy rating service. Actual savings will depend on a number of factors, including but not limited to daily activities, home maintenance practices, household size, use of appliances, lighting and internal climate control systems, lot orientation, and surrounding climate and weather conditions. **Created on 01/28/2026:** _____ **Garage Orientation R / L:** _____

