



THE DUVAL at SEVEN PINES

THE DUVAL - COASTAL

4 Bedrooms • 3 Bathrooms • 3-Car Garage • 2,665 ft² Living Area • 3,814 ft² Under Roof

The Duval is a spacious 2,665-square-foot home that offers four bedrooms and three baths in a beautifully open and functional layout. The heart of the home is a large living area that connects the deluxe kitchen, dining area, and extended covered lanai—ideal for both entertaining and everyday life. The luxurious master suite, with its walk-in closet and spa-like bath, serves as a private retreat, while three additional bedrooms provide flexibility for family and guests. With ICI Homes' customization options, the Duval can be tailored to reflect your unique lifestyle and needs.

* Renderings may vary from actual home. Please see disclaimer for more details.

\$2,724

ESTIMATED SAVINGS



This home has a HERS Score of 58 and is estimated to save you \$2,724 on your annual utility bills vs. a resale home.

THE DUVAL

4 Bedrooms • 3 Bathrooms • 3-Car Garage

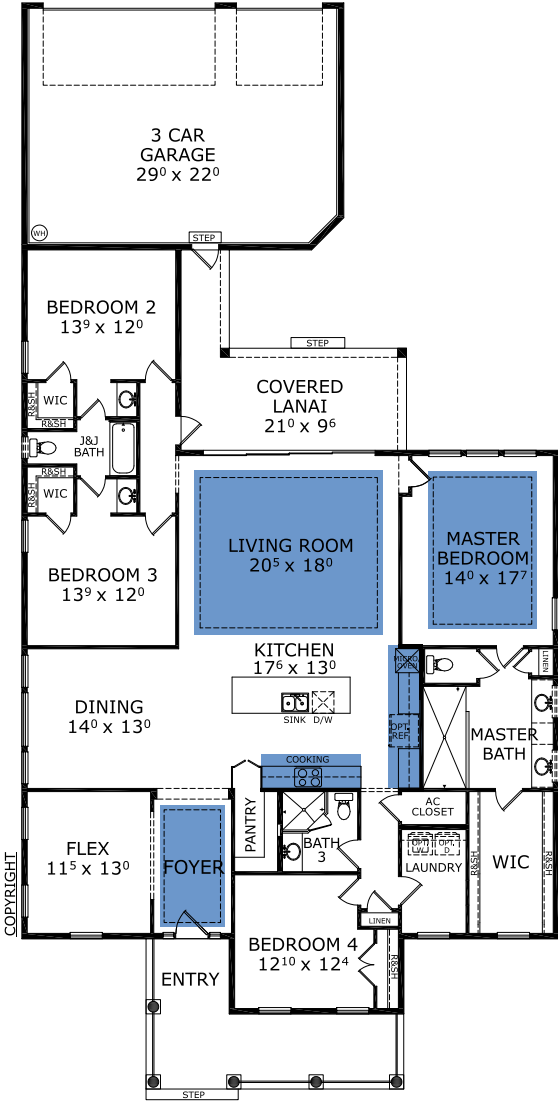
Seven Pines
Jacksonville, FL

Available in
Seven Pines 60 RL

Living Area: 2,665 ft² Under Roof: 3,814 ft²



FIRST FLOOR



Floor Plan Comparison Tool

Close

Customize this plan, it's easy! (844) 349-6401 or visit [ICIHomes.com](https://www.ICHomes.com)

include lot premiums, upgrades, and options. Inventory home completion date may vary. All prices subject to change without notice. All plans are property of ICI Homes and cannot be copied or used without permission. Prices, promotions, incentives, features, options, amenities, floor plans, elevations, site maps, designs, materials, and dimensions are for illustrative purposes only and subject to change without notice. Plans should not be relied upon as representation express or implied of final sizes, locations, features or dimensions. Square footage and dimensions are estimated and may vary from description. All HERS ratings and savings are calculated by a third party energy rating service. Actual savings will depend on a number of factors, including but not limited to daily activities, home maintenance practices, household size, use of appliances, lighting and internal climate control systems, lot orientation, and surrounding climate and weather conditions. **Created on 01/28/2026:** _____ **Garage Orientation R / L:** _____

