



## THE EAST PORT at SEVEN PINES

THE EAST PORT - TRANSITIONAL

READY SOON

**4 Bedrooms • 3 Bathrooms • 2-Car Garage • 2,477 ft<sup>2</sup> Living Area • 3,297 ft<sup>2</sup> Under Roof**

The East Port is a 2,477-square-foot, four-bedroom, three-bath home that offers flexible, family-friendly living. The first floor's open layout connects the living room, dining area, and a gourmet kitchen with a large island and walk-in pantry. The covered lanai extends your living space outdoors, while the main-floor master suite provides a private retreat with a spacious bath. Upstairs, a large game room and two additional bedrooms create a perfect space for family and guests, with a private balcony as a charming bonus. Customizable options from ICI Homes allow you to personalize the East Port to fit your lifestyle.

\* Renderings may vary from actual home. Please see disclaimer for more details.

**\$2,729**

**ESTIMATED SAVINGS**



This home has a HERS Score of 61 and is estimated to save you \$2,729 on your annual utility bills vs. a resale home.

# THE EAST PORT

4 Bedrooms • 3 Bathrooms • 2-Car Garage

READY SOON

## Seven Pines

Heritage Series | 40' Wide Lots | Rear Load - Lot 001

12200 Grand Pine Drive  
Jacksonville, FL, 32224

Living Area: 2,477 ft<sup>2</sup>

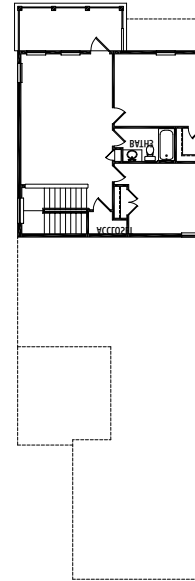
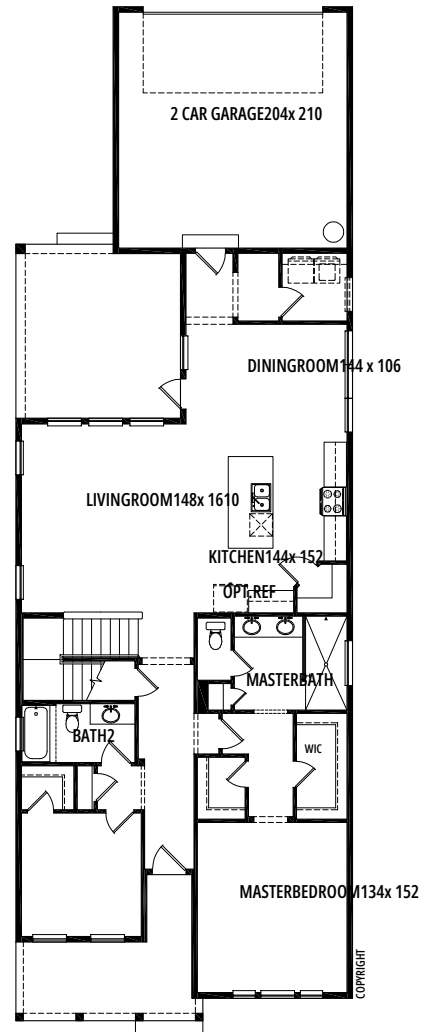
### Structural Options Included in This Home:

- ✓ Shower ilo Guest Tub @ Bath
- ✓ Kitchen Deluxe - NFD
- ✓ Ceiling 12 @ Kitchen/Living/Dining
- ✓ Outlet-Floor Plug Brass
- ✓ Wood Railing @ Stairs
- ✓ Delete Drop Zone
- ✓ DELETE OPTION 00560

And much more....

Priced at: **\$792,286**

## FIRST-SECOND FLOOR



Floor Plan Comparison Tool

Close

This East Port is a Ready Soon! [Speak to a Sales Counselor \(844\) 349-6401](#) or visit [ICIHomes.com](#)

include lot premiums, upgrades, and options. Inventory home completion date may vary. All prices subject to change without notice. All plans are property of ICI Homes and cannot be copied or used without permission. Prices, promotions, incentives, features, options, amenities, floor plans, elevations, site maps, designs, materials, and dimensions are for illustrative purposes only and subject to change without notice. Plans should not be relied upon as representation express or implied of final sizes, locations, features or dimensions. Square footage and dimensions are estimated and may vary from description. All HERS ratings and savings are calculated by a third party energy rating service. Actual savings will depend on a number of factors, including but not limited to daily activities, home maintenance practices, household size, use of appliances, lighting and internal climate control systems, lot orientation, and surrounding climate and weather conditions. **Created on 01/28/2026:** \_\_\_\_\_ **Garage Orientation R / L:** \_\_\_\_\_

