



THE EGRET at BROWNS LANDING

THE MODERN

3 Bedrooms • 3 Bathrooms • 2-Car Garage • 3,137 ft² Living Area • 4,432 ft² Under Roof

The Egret is a luxurious 3,137-square-foot home with three bedrooms, three baths, and a two-car garage, designed for both elegance and comfort. The open layout connects a deluxe kitchen, dining room, and spacious living room, extending to a covered lanai for seamless indoor-outdoor living. The private master suite features dual walk-in closets, a spa-like bath, and an adjoining exercise space. Two additional bedrooms and a private study complete the home, offering versatility and privacy. With ICI Homes' customization options, the Egret can be tailored to perfectly suit your lifestyle and tastes.

* Renderings may vary from actual home. Please see disclaimer for more details.

\$2,987

ESTIMATED SAVINGS



This home has a HERS Score of 58 and is estimated to save you \$2,987 on your annual utility bills vs. a resale home.

THE EGRET

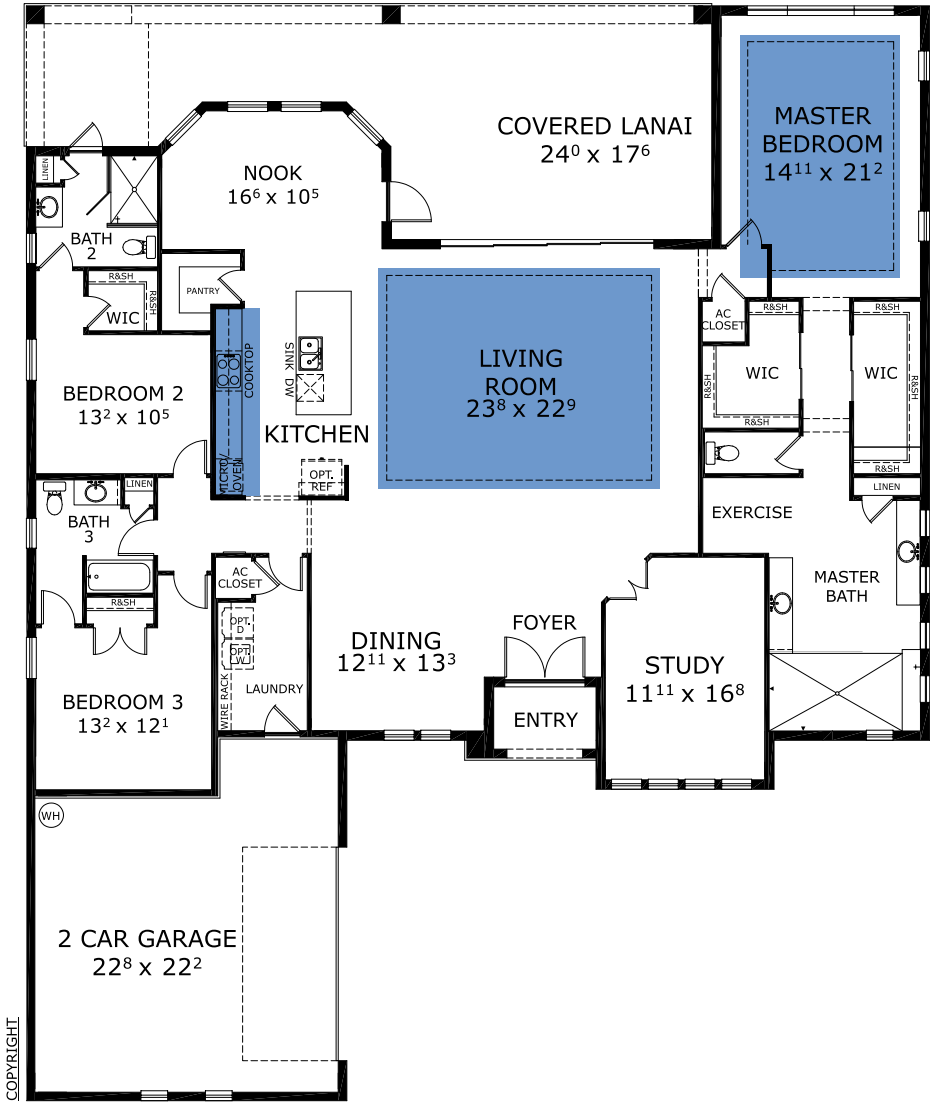
3 Bedrooms • 3 Bathrooms • 2-Car Garage

Browns Landing Available in
Port Orange, FL Estates at Browns Landing OYL

Living Area: 3,137 ft² **Under Roof:** 4,432 ft²



FIRST FLOOR



Floor Plan Comparison Tool

Close

Customize this plan, it's easy! (844) 349-6401 or visit [ICIHomes.com](https://www.ICHomes.com)

include lot premiums, upgrades, and options. Inventory home completion date may vary. All prices subject to change without notice. All plans are property of ICI Homes and cannot be copied or used without permission. Prices, promotions, incentives, features, options, amenities, floor plans, elevations, site maps, designs, materials, and dimensions are for illustrative purposes only and subject to change without notice. Plans should not be relied upon as representation express or implied of final sizes, locations, features or dimensions. Square footage and dimensions are estimated and may vary from description. All HERS ratings and savings are calculated by a third party energy rating service. Actual savings will depend on a number of factors, including but not limited to daily activities, home maintenance practices, household size, use of appliances, lighting and internal climate control systems, lot orientation, and surrounding climate and weather conditions. **Created on 01/28/2026:** _____ **Garage Orientation R / L:** _____

