



THE EGRET II at VOLUSIA/FLAGLER OFFSITE

THE EGRET II - TUSCAN

3 Bedrooms • 3 Bathrooms • 2-Car Garage • 2,969 ft² Living Area • 4,386 ft² Under Roof

The Egret II is a spacious 2,969-square-foot home that combines elegance with functionality. This single-story layout includes three bedrooms, three baths, a private study, and a large two-car garage. The open living area connects a deluxe kitchen, cozy nook, and airy living room, which opens to a covered lanai for seamless indoor-outdoor living. The master suite, with dual walk-in closets and a spa-like bath, offers a private retreat. Two additional bedrooms and a study complete the home, with customization options from ICI Homes allowing you to tailor every detail to suit your lifestyle.

* Renderings may vary from actual home. Please see disclaimer for more details.

\$2,833

ESTIMATED SAVINGS



This home has a HERS Score of 59 and is estimated to save you \$2,833 on your annual utility bills vs. a resale home.

THE EGRET II

3 Bedrooms • 3 Bathrooms • 2-Car Garage

Volusia/Flagler

Offsite

Ormond Beach, FL

Available in

Volusia Flagler On Your Lot 2

Living Area: 2,969 ft² Under Roof: 4,386 ft²

THE MODERN



THE MEDITERRANEAN



THE FLORIDA TRADITIONAL - STUCCO



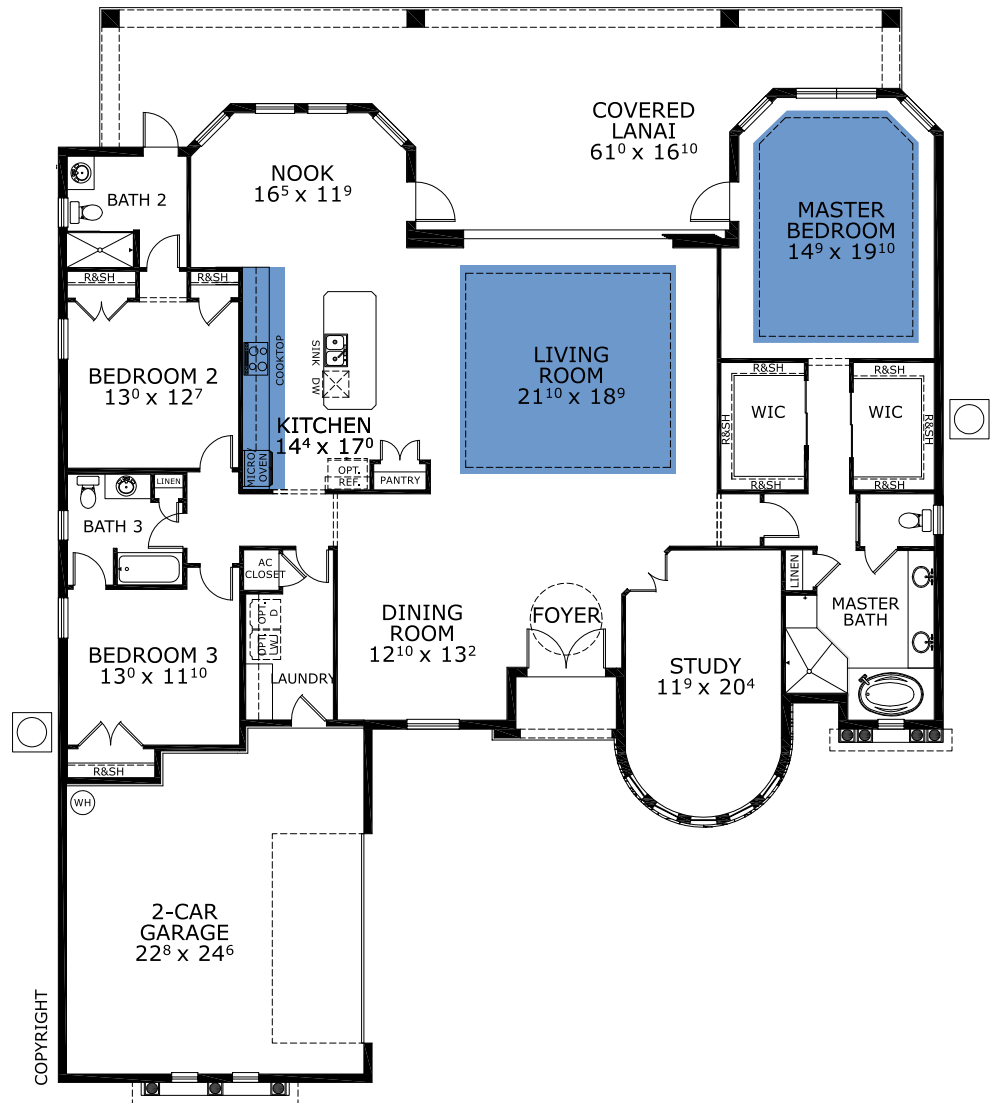
THE FARMHOUSE



THE ELEVATION Y



FIRST FLOOR



Floor Plan Comparison Tool

Close

Customize this plan, it's easy! (844) 349-6401 or visit ICIHomes.com

include lot premiums, upgrades, and options. Inventory home completion date may vary. All prices subject to change without notice. All plans are property of ICI Homes and cannot be copied or used without permission. Prices, promotions, incentives, features, options, amenities, floor plans, elevations, site maps, designs, materials, and dimensions are for illustrative purposes only and subject to change without notice. Plans should not be relied upon as representation express or implied of final sizes, locations, features or dimensions. Square footage and dimensions are estimated and may vary from description. All HERS ratings and savings are calculated by a third party energy rating service. Actual savings will depend on a number of factors, including but not limited to daily activities, home maintenance practices, household size, use of appliances, lighting and internal climate control systems, lot orientation, and surrounding climate and weather conditions. **Created on 01/28/2026:** _____ **Garage Orientation R / L:** _____

