



THE EGRET VI at VOLUSIA/FLAGLER OFFSITE

THE EGRET VI - SPANISH

4 Bedrooms • 3 Bathrooms • 2-Car Garage • 2,512 ft² Living Area • 3,415 ft² Under Roof

The Egret VI is a 2,512-square-foot home that effortlessly blends elegance with comfort, featuring four bedrooms, three baths, and a flexible layout designed for modern living. The spacious living room flows into a deluxe kitchen with a cozy nook and easy access to a covered lanai—perfect for year-round outdoor enjoyment. The private master suite includes dual walk-in closets and a spa-like bath for ultimate relaxation. With ICI Homes' custom options, you can personalize every aspect, from adding a summer kitchen to modifying the flex room, ensuring this home meets your every need.

* Renderings may vary from actual home. Please see disclaimer for more details.

\$2,539

ESTIMATED SAVINGS



This home has a HERS Score of 57 and is estimated to save you \$2,539 on your annual utility bills vs. a resale home.

4 Bedrooms • 3 Bathrooms • 2-Car Garage

Volusia/Flagler

Offsite

Ormond Beach, FL

Available in

Volusia Flagler On Your Lot

Living Area: 2,512 ft² **Under Roof:** 3,415 ft²

THE WEST INDIES



THE TUSCAN



THE MEDITERRANEAN



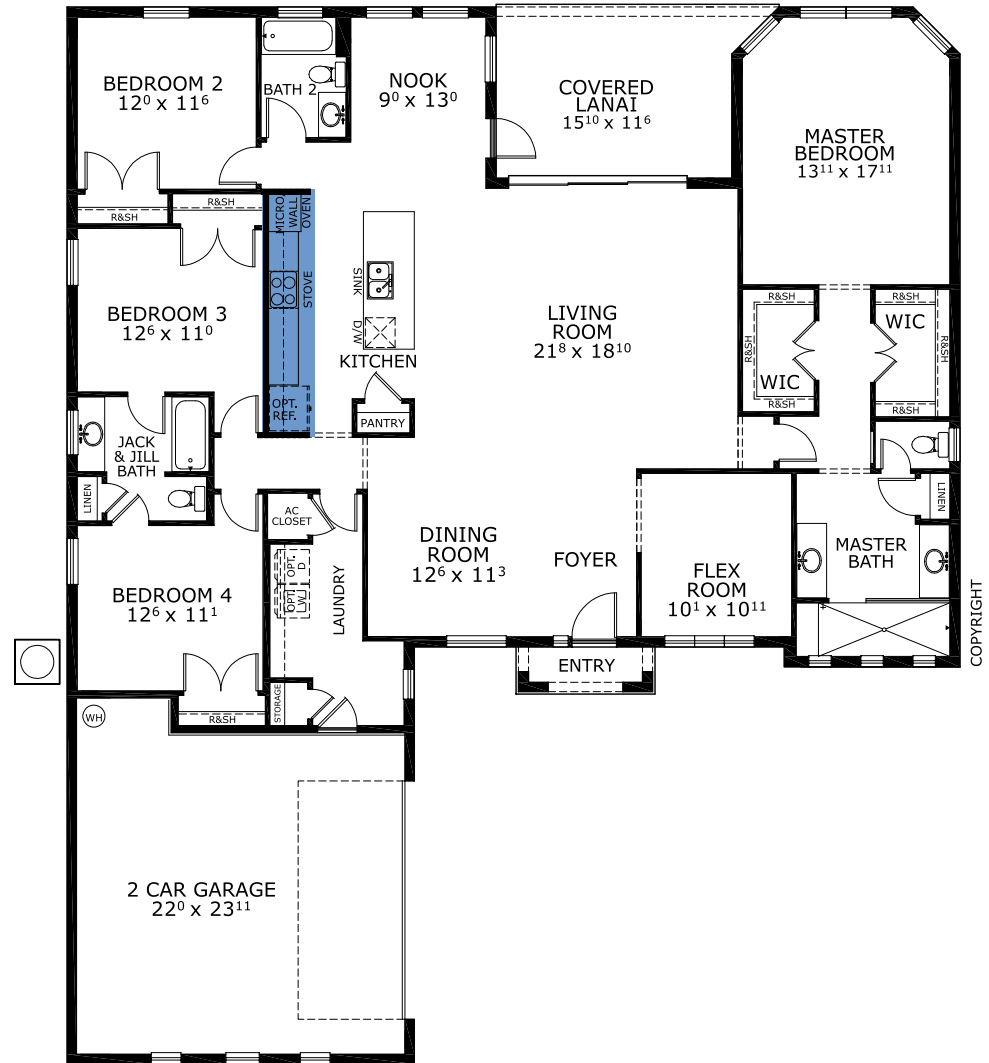
THE COASTAL



THE CRAFTSMAN



FIRST FLOOR



COPYRIGHT

Floor Plan Comparison Tool

Close

Customize this plan, it's easy! (844) 349-6401 or visit ICIHomes.com

include lot premiums, upgrades, and options. Inventory home completion date may vary. All prices subject to change without notice. All plans are property of ICI Homes and cannot be copied or used without permission. Prices, promotions, incentives, features, options, amenities, floor plans, elevations, site maps, designs, materials, and dimensions are for illustrative purposes only and subject to change without notice. Plans should not be relied upon as representation express or implied of final sizes, locations, features or dimensions. Square footage and dimensions are estimated and may vary from description. All HERS ratings and savings are calculated by a third party energy rating service. Actual savings will depend on a number of factors, including but not limited to daily activities, home maintenance practices, household size, use of appliances, lighting and internal climate control systems, lot orientation, and surrounding climate and weather conditions. **Created on 01/28/2026:** _____ **Garage Orientation R / L:** _____

