



THE EGRET VII at WOODHAVEN

THE EGRET VII - FLORIDA TRADITIONAL

4 Bedrooms • 3 Bathrooms • 3-Car Garage • 2,813 ft² Living Area • 3,696 ft² Under Roof

The Egret VII is a 2,813-square-foot, four-bedroom, three-bath home designed for both style and functionality. Its expansive living room flows into a deluxe kitchen and cozy breakfast nook, with easy access to a covered lanai perfect for year-round outdoor enjoyment. The private master suite offers dual walk-in closets, a spa-like bath, and an optional soaking tub. A flex room adds versatility for a home office or guest space. With ICI Homes' customization options, personalize every detail to match your lifestyle—from an added garage bay to a summer kitchen, making the Egret VII truly yours.

* Renderings may vary from actual home. Please see disclaimer for more details.

\$2,686

ESTIMATED SAVINGS



This home has a HERS Score of 57 and is estimated to save you \$2,686 on your annual utility bills vs. a resale home.

THE EGRET VII

4 Bedrooms • 3 Bathrooms • 3-Car Garage

Woodhaven
Port Orange, FL

Available in
Woodhaven 70

Living Area: 2,813 ft² Under Roof: 3,696 ft²

THE MODERN



THE MEDITERRANEAN



THE TUSCAN



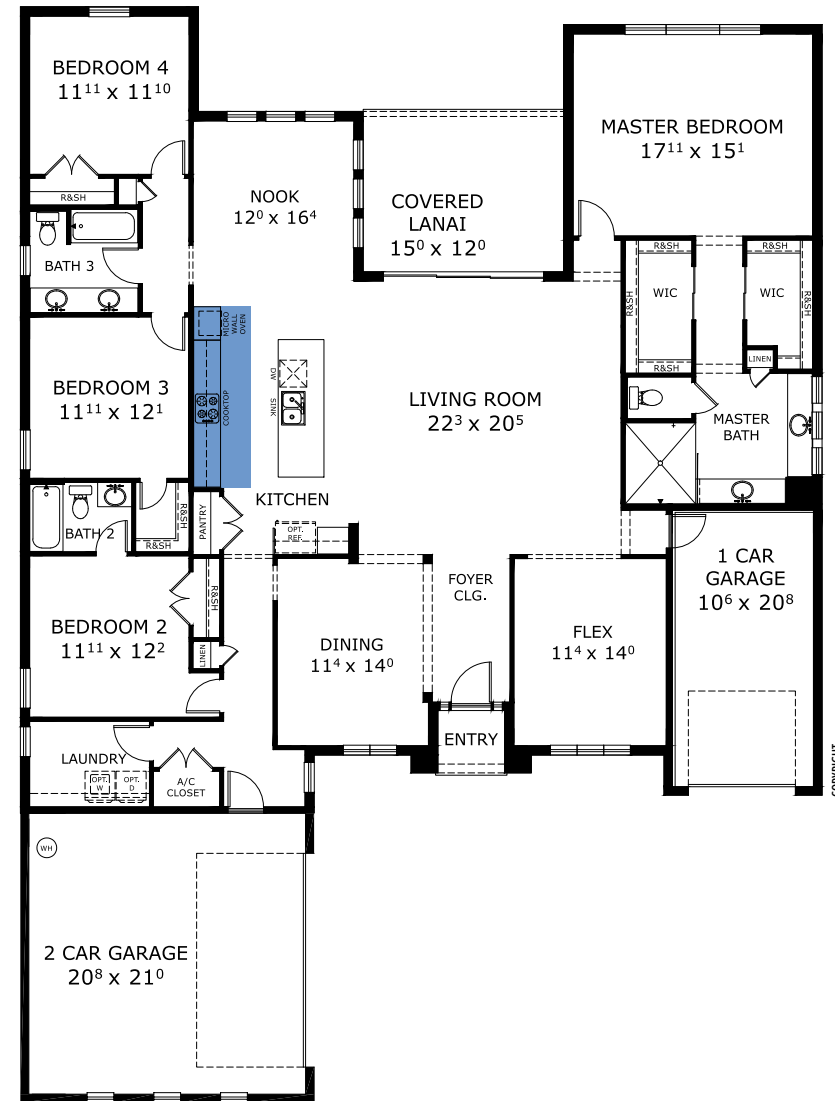
THE CRAFTSMAN



THE COASTAL



FIRST FLOOR



Floor Plan Comparison Tool

Close

Customize this plan, it's easy! (844) 349-6401 or visit ICIHomes.com

include lot premiums, upgrades, and options. Inventory home completion date may vary. All prices subject to change without notice. All plans are property of ICI Homes and cannot be copied or used without permission. Prices, promotions, incentives, features, options, amenities, floor plans, elevations, site maps, designs, materials, and dimensions are for illustrative purposes only and subject to change without notice. Plans should not be relied upon as representation express or implied of final sizes, locations, features or dimensions. Square footage and dimensions are estimated and may vary from description. All HERS ratings and savings are calculated by a third party energy rating service. Actual savings will depend on a number of factors, including but not limited to daily activities, home maintenance practices, household size, use of appliances, lighting and internal climate control systems, lot orientation, and surrounding climate and weather conditions. **Created on 01/28/2026:** _____ **Garage Orientation R / L:** _____

