



THE FONTANA at OTHER / OFFSITE

THE FONTANA - MEDITERRANEAN

3 Bedrooms • 2 Bathrooms • 2-Car Garage • 1,650 ft² Living Area • 2,173 ft² Under Roof

The Fontana is a 1,650-square-foot, three-bedroom, two-bath home with an open-concept design. The spacious living room connects seamlessly to a modern kitchen and dining area, leading to a covered lanai that's perfect for relaxation. The master suite offers a private retreat with a walk-in closet and en-suite bath, while two additional bedrooms provide flexible living options. With ICI Homes' customization options, you can personalize the Fontana to suit your lifestyle, from an upgraded kitchen to an expanded lanai, creating a home that feels uniquely yours.

* Renderings may vary from actual home. Please see disclaimer for more details.

\$1,993

ESTIMATED SAVINGS



This home has a HERS Score of 59 and is estimated to save you \$1,993 on your annual utility bills vs. a resale home.

THE FONTANA

3 Bedrooms • 2 Bathrooms • 2-Car Garage

Other / Offsite
Jacksonville, FL

Available in
Custom Jax St Johns

Living Area: 1,650 ft² Under Roof: 2,173 ft²

THE SPANISH



THE TRADITIONAL MODERN



THE VERNACULAR



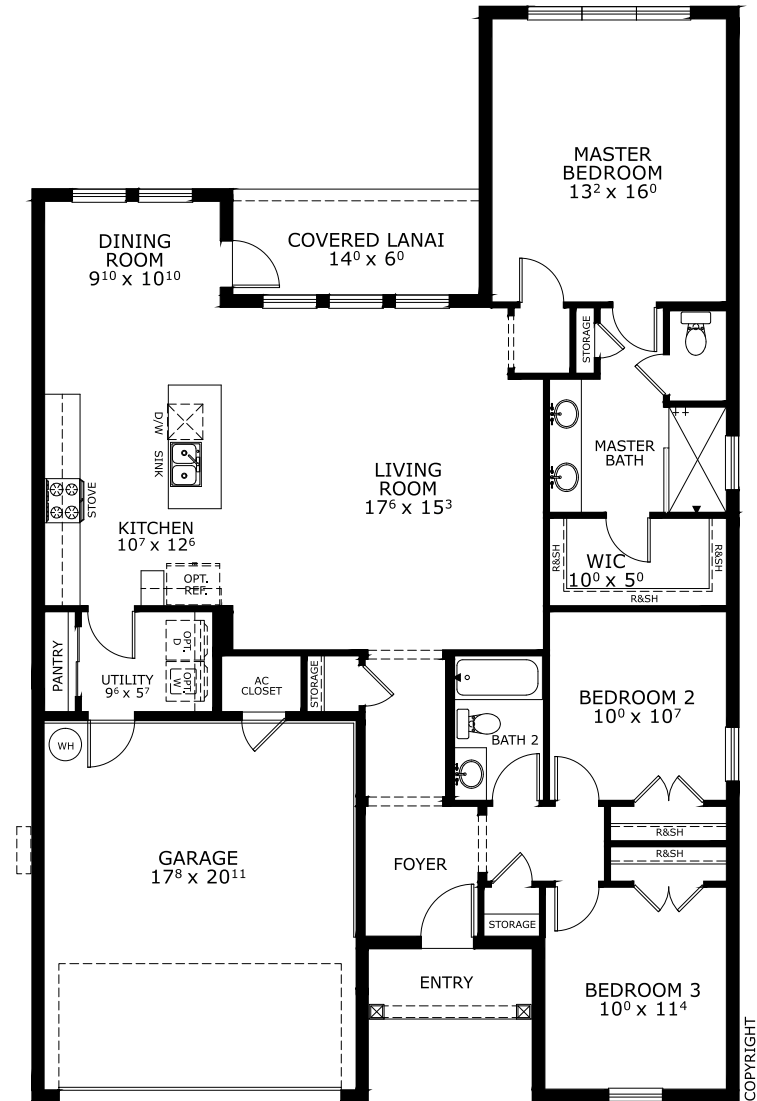
THE COASTAL



THE CRAFTSMAN



FIRST FLOOR



COPYRIGHT

Floor Plan Comparison Tool

Close

Customize this plan, it's easy! (844) 349-6401 or visit ICIHomes.com

include lot premiums, upgrades, and options. Inventory home completion date may vary. All prices subject to change without notice. All plans are property of ICI Homes and cannot be copied or used without permission. Prices, promotions, incentives, features, options, amenities, floor plans, elevations, site maps, designs, materials, and dimensions are for illustrative purposes only and subject to change without notice. Plans should not be relied upon as representation express or implied of final sizes, locations, features or dimensions. Square footage and dimensions are estimated and may vary from description. All HERS ratings and savings are calculated by a third party energy rating service. Actual savings will depend on a number of factors, including but not limited to daily activities, home maintenance practices, household size, use of appliances, lighting and internal climate control systems, lot orientation, and surrounding climate and weather conditions. **Created on 01/28/2026:** _____ **Garage Orientation R / L:** _____

