



## THE HARBOR at NOCATEE

THE HARBOR - WEST INDIES

**4 Bedrooms • 3.5 Bathrooms • 2-Car Garage • 1,877 ft<sup>2</sup> Living Area • 2,431 ft<sup>2</sup> Under Roof**

The Harbor floor plan is a 1,877-square-foot, four-bedroom, three and a half bath home that combines style and functionality. The two-story living room flows into a dining area and a modern kitchen, creating an open main floor. The main-level master suite offers a private retreat with a walk-in closet and en-suite bath. Upstairs, three bedrooms and a flexible retreat area provide additional space for family or guests, with a covered balcony for relaxation. With ICI Homes' customization options, you can personalize the Harbor to match your lifestyle, creating a home that feels truly yours.

\* Renderings may vary from actual home. Please see disclaimer for more details.

**\$2,462**

**ESTIMATED SAVINGS**



This home has a HERS Score of 63 and is estimated to save you \$2,462 on your annual utility bills vs. a resale home.

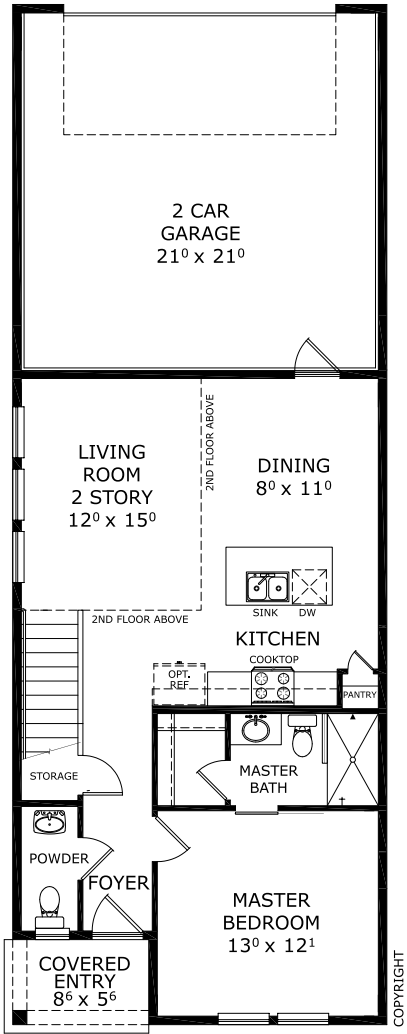
# THE HARBOR

4 Bedrooms • 3.5 Bathrooms • 2-Car Garage

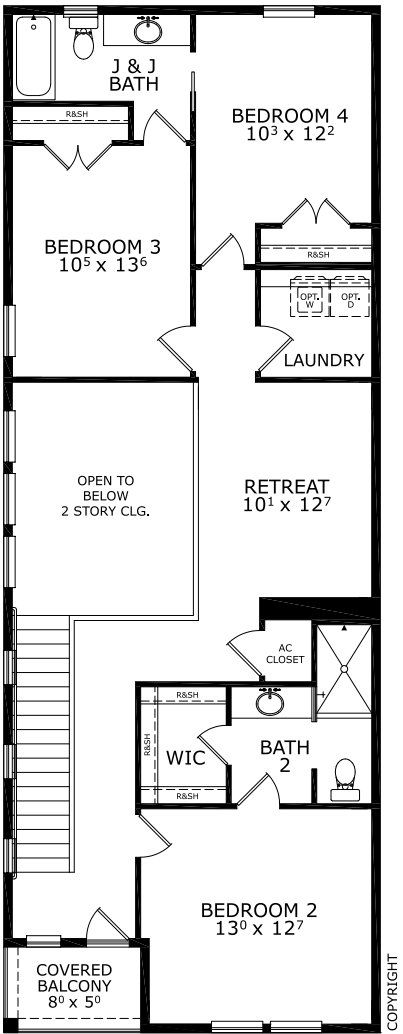
**Nocatee**  
Ponte Vedra, FL

**Available in**  
West End Townhomes

**Living Area:** 1,877 ft<sup>2</sup> **Under Roof:** 2,431 ft<sup>2</sup>



## FIRST-SECOND FLOOR



Floor Plan Comparison Tool

Close

No Maintenance Townhomes! [Speak to a Sales Counselor \(844\) 349-6401](#) or visit [ICIHomes.com](#)

include lot premiums, upgrades, and options. Inventory home completion date may vary. All prices subject to change without notice. All plans are property of ICI Homes and cannot be copied or used without permission. Prices, promotions, incentives, features, options, amenities, floor plans, elevations, site maps, designs, materials, and dimensions are for illustrative purposes only and subject to change without notice. Plans should not be relied upon as representation express or implied of final sizes, locations, features or dimensions. Square footage and dimensions are estimated and may vary from description. All HERS ratings and savings are calculated by a third party energy rating service. Actual savings will depend on a number of factors, including but not limited to daily activities, home maintenance practices, household size, use of appliances, lighting and internal climate control systems, lot orientation, and surrounding climate and weather conditions. **Created on 01/28/2026:** \_\_\_\_\_ **Garage Orientation R / L:** \_\_\_\_\_

