



THE ISABELLA at VOLUSIA/FLAGLER OFFSITE

THE ISABELLA - MEDITERRANEAN

3 Bedrooms • 2.5 Bathrooms • 2-Car Garage • 3,447 ft² Living Area • 4,558 ft² Under Roof

The Isabella floor plan spans an impressive 3,359 square feet, perfectly balancing open-concept living with private retreats. This single-story, three-bedroom, 2.5-bath home offers a luxurious master suite with a spa-like bath, a gourmet kitchen with a deluxe island and wine storage, and an expansive living room with tray ceilings that opens to a covered lanai. Additional highlights include a formal dining room, a cozy nook, a flexible game room, and a front flex space ready to become an office or library. With ICI Homes' customization options, the Isabella can be crafted to fit your lifestyle perfectly.

* Renderings may vary from actual home. Please see disclaimer for more details.

\$2,980

ESTIMATED SAVINGS



This home has a HERS Score of 59 and is estimated to save you \$2,980 on your annual utility bills vs. a resale home.

THE ISABELLA

3 Bedrooms • 2.5 Bathrooms • 2-Car Garage

Volusia/Flagler

Offsite

Ormond Beach, FL

Available in

Volusia Flagler On Your Lot 2

Living Area: 3,447 ft² **Under Roof:** 4,558 ft²

THE SPANISH



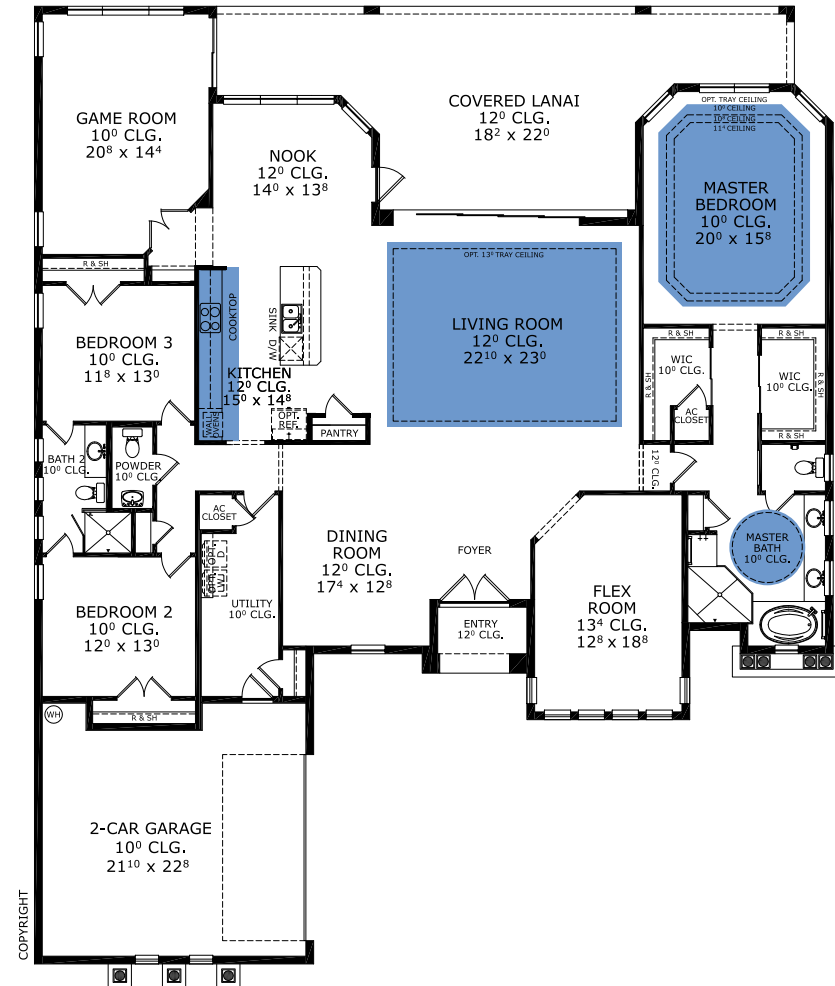
THE WEST INDIES



THE TUSCAN



FIRST FLOOR



Floor Plan Comparison Tool

Close

Customize this plan, it's easy! (844) 349-6401 or visit ICIHomes.com

include lot premiums, upgrades, and options. Inventory home completion date may vary. All prices subject to change without notice. All plans are property of ICI Homes and cannot be copied or used without permission. Prices, promotions, incentives, features, options, amenities, floor plans, elevations, site maps, designs, materials, and dimensions are for illustrative purposes only and subject to change without notice. Plans should not be relied upon as representation express or implied of final sizes, locations, features or dimensions. Square footage and dimensions are estimated and may vary from description. All HERS ratings and savings are calculated by a third party energy rating service. Actual savings will depend on a number of factors, including but not limited to daily activities, home maintenance practices, household size, use of appliances, lighting and internal climate control systems, lot orientation, and surrounding climate and weather conditions. **Created on 01/28/2026:** _____ **Garage Orientation R / L:** _____

