



## THE JULIETTE at AMELIA NATIONAL

THE JULIETTE - VERNACULAR

**3 Bedrooms • 2 Bathrooms • 2-Car Garage • 1,976 ft<sup>2</sup> Living Area • 2,611 ft<sup>2</sup> Under Roof**

The Juliette floor plan combines style and function in 1,976 square feet. This single-story home offers three bedrooms, two baths, and a versatile flex room. The open-concept living area includes a gourmet kitchen, dining room, and spacious living room, all enhanced by elegant tray ceilings. The private master suite features a luxurious bath and large walk-in closet. Two additional bedrooms offer space for family or guests. Enjoy outdoor living on the covered lanai, with options to extend the space. With ICI Homes' customization options, the Juliette can be tailored to fit your lifestyle.

\* Renderings may vary from actual home. Please see disclaimer for more details.

**\$2,223**

**ESTIMATED SAVINGS**



This home has a HERS Score of 58 and is estimated to save you \$2,223 on your annual utility bills vs. a resale home.

# THE JULIETTE

**3 Bedrooms • 2 Bathrooms • 2-Car Garage**

**Amelia National** Available in  
Fernandina Beach, FL Amelia National 60

**Living Area:** 1,976 ft<sup>2</sup> **Under Roof:** 2,611 ft<sup>2</sup>

## THE FARMHOUSE



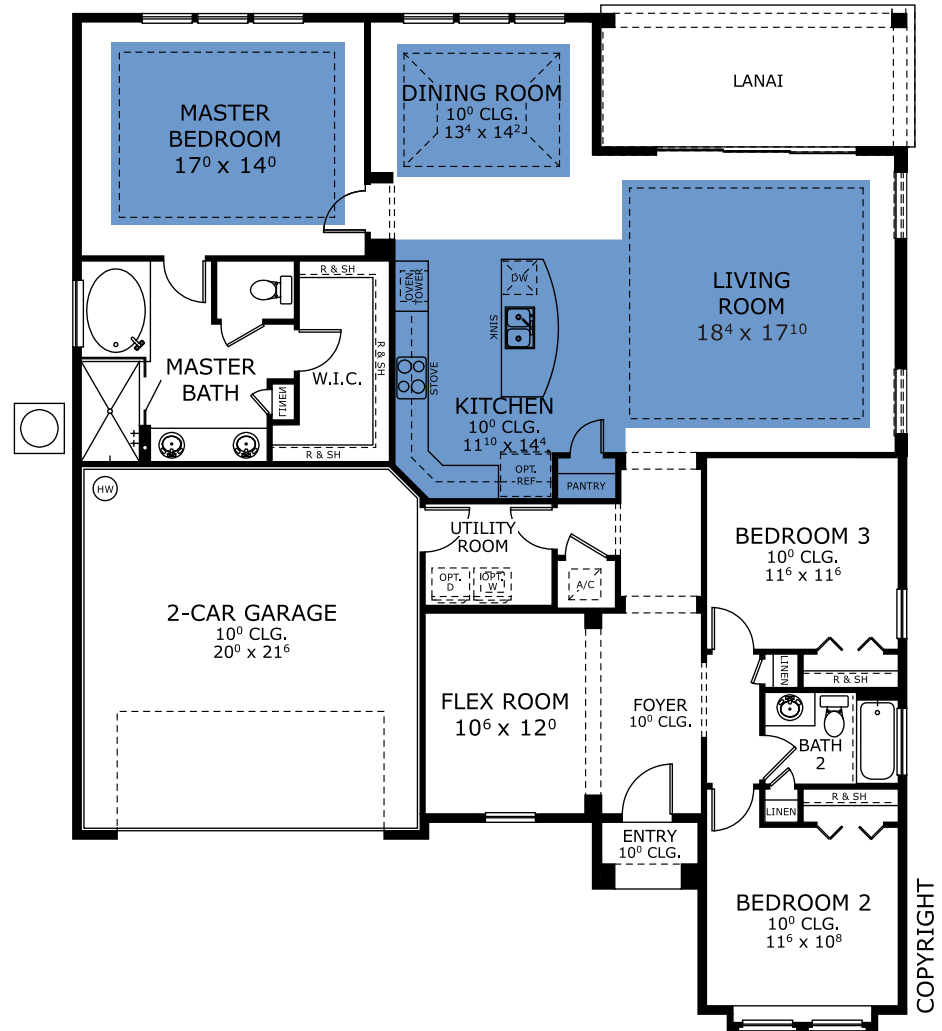
## THE COASTAL



## THE CRAFTSMAN



## FIRST FLOOR



COPYRIGHT

# Floor Plan Comparison Tool

Close

Customize this plan, it's easy! (844) 349-6401 or visit [ICIHomes.com](http://ICIHomes.com)

include lot premiums, upgrades, and options. Inventory home completion date may vary. All prices subject to change without notice. All plans are property of ICI Homes and cannot be copied or used without permission. Prices, promotions, incentives, features, options, amenities, floor plans, elevations, site maps, designs, materials, and dimensions are for illustrative purposes only and subject to change without notice. Plans should not be relied upon as representation express or implied of final sizes, locations, features or dimensions. Square footage and dimensions are estimated and may vary from description. All HERS ratings and savings are calculated by a third party energy rating service. Actual savings will depend on a number of factors, including but not limited to daily activities, home maintenance practices, household size, use of appliances, lighting and internal climate control systems, lot orientation, and surrounding climate and weather conditions. **Created on 01/28/2026:** \_\_\_\_\_ **Garage Orientation R / L:** \_\_\_\_\_

