



## THE MONICA at OAKMONT

THE WEST INDIES

**4 Bedrooms • 4.5 Bathrooms • 4-Car Garage • 3,488 ft<sup>2</sup> Living Area • 5,052 ft<sup>2</sup> Under Roof**

The Monica floor plan offers 3,488 square feet of thoughtfully designed luxury, featuring four bedrooms, four baths, and a four-car garage. A grand entry leads to a spacious dining room and study, while the vaulted living room flows seamlessly into the kitchen and nook. The master suite is a private retreat, with French doors to the lanai, a spa-inspired bath, and a large walk-in closet. Additional bedrooms provide comfort and privacy, and flexible spaces like a game room and cabana guest suite allow for customization. Tailor the Monica with ICI Homes' wide array of options to create your dream home.

\* Renderings may vary from actual home. Please see disclaimer for more details.

**\$3,459**

**ESTIMATED SAVINGS**



This home has a HERS Score of 66 and is estimated to save you \$3,459 on your annual utility bills vs. a resale home.

# THE MONICA

**4 Bedrooms • 4.5 Bathrooms • 4-Car Garage**

**Oakmont**  
Gainesville, FL

**Available in**  
Oakmont 100

**Living Area: 3,488 ft<sup>2</sup> Under Roof: 5,052 ft<sup>2</sup>**

## THE COASTAL MODERN



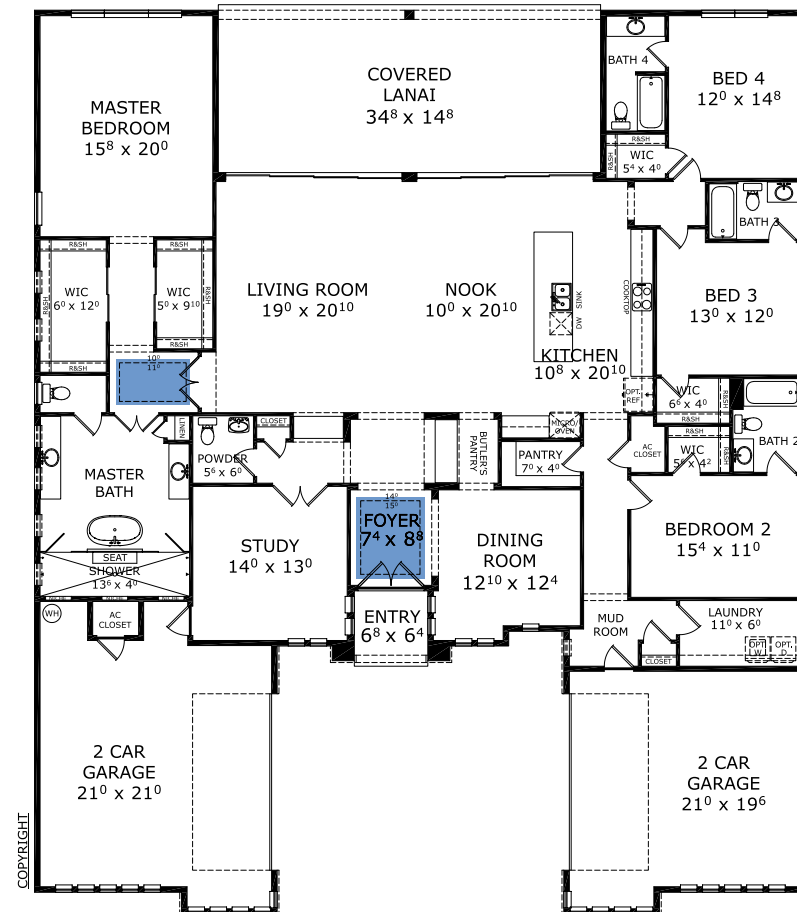
## THE PRAIRIE MODERN



## THE PRAIRIE



## FIRST FLOOR



# Floor Plan Comparison Tool

Close

Customize this plan, it's easy! (844) 349-6401 or visit [ICIHomes.com](http://ICIHomes.com)

include lot premiums, upgrades, and options. Inventory home completion date may vary. All prices subject to change without notice. All plans are property of ICI Homes and cannot be copied or used without permission. Prices, promotions, incentives, features, options, amenities, floor plans, elevations, site maps, designs, materials, and dimensions are for illustrative purposes only and subject to change without notice. Plans should not be relied upon as representation express or implied of final sizes, locations, features or dimensions. Square footage and dimensions are estimated and may vary from description. All HERS ratings and savings are calculated by a third party energy rating service. Actual savings will depend on a number of factors, including but not limited to daily activities, home maintenance practices, household size, use of appliances, lighting and internal climate control systems, lot orientation, and surrounding climate and weather conditions. **Created on 01/28/2026:** \_\_\_\_\_ **Garage Orientation R / L:** \_\_\_\_\_

