



## THE NIKA at VERANDA BAY

THE NIKA - WEST INDIES

**3 Bedrooms • 2.5 Bathrooms • 2-Car Garage • 2,301 ft<sup>2</sup> Living Area • 2,972 ft<sup>2</sup> Under Roof**

The Nika floor plan offers 2,301 square feet of thoughtfully designed living space, with three bedrooms, two and a half baths, and a two-car garage. The open-concept kitchen, dining, and living area create a seamless space for entertaining, with a covered lanai just beyond. The master suite, located at the rear for privacy, includes a luxurious en-suite bath and a large walk-in closet. A flexible room off the foyer adds versatility, while ICI Homes' customization options let you personalize every detail—from tray ceilings to an extended lanai—making the Nika uniquely yours.

\* Renderings may vary from actual home. Please see disclaimer for more details.

**\$2,259**

**ESTIMATED SAVINGS**



This home has a HERS Score of 64 and is estimated to save you \$2,259 on your annual utility bills vs. a resale home.

# THE NIKA

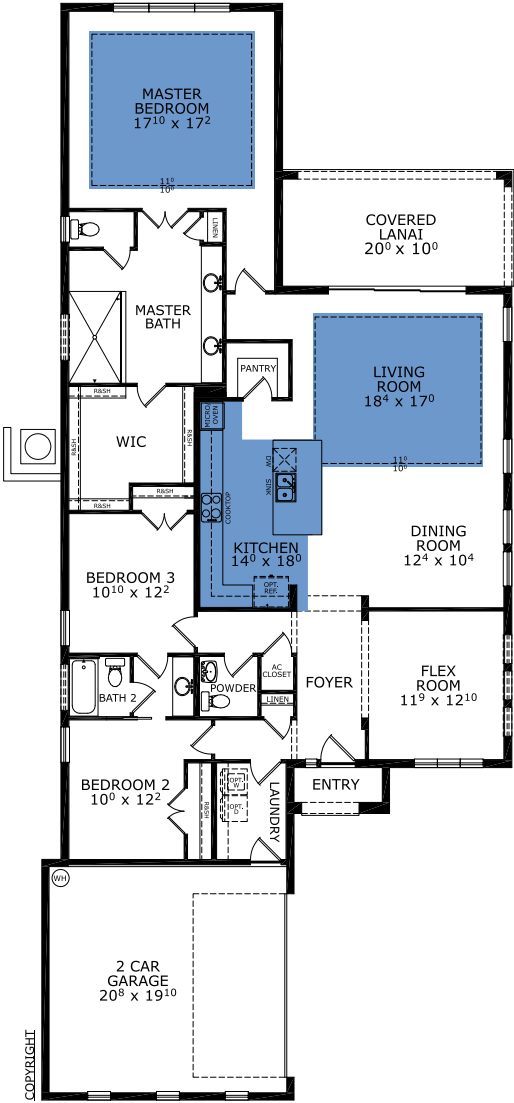
3 Bedrooms • 2.5 Bathrooms • 2-Car Garage

Veranda Bay  
Flagler Beach, FL

Available in  
Veranda Bay 50 OYL

Living Area: 2,301 ft<sup>2</sup> Under Roof: 2,972 ft<sup>2</sup>

## FIRST FLOOR



Floor Plan Comparison Tool

Close

Customize this plan, it's easy! (844) 349-6401 or visit ICIHomes.com

include lot premiums, upgrades, and options. Inventory home completion date may vary. All prices subject to change without notice. All plans are property of ICI Homes and cannot be copied or used without permission. Prices, promotions, incentives, features, options, amenities, floor plans, elevations, site maps, designs, materials, and dimensions are for illustrative purposes only and subject to change without notice. Plans should not be relied upon as representation express or implied of final sizes, locations, features or dimensions. Square footage and dimensions are estimated and may vary from description. All HERS ratings and savings are calculated by a third party energy rating service. Actual savings will depend on a number of factors, including but not limited to daily activities, home maintenance practices, household size, use of appliances, lighting and internal climate control systems, lot orientation, and surrounding climate and weather conditions. **Created on 01/28/2026:** \_\_\_\_\_ **Garage Orientation R / L:** \_\_\_\_\_

