



THE NINA at VERANDA BAY

THE NINA - WEST INDIES

3 Bedrooms • 3 Bathrooms • 2-Car Garage • 2,520 ft² Living Area • 3,232 ft² Under Roof

The Nina floor plan offers 2,520 square feet of thoughtfully designed living space, ideal for both relaxation and entertaining. This three-bedroom, three-bathroom home features an open-concept living area where the deluxe kitchen, dining room, and living room flow seamlessly, leading to an extended covered lanai for perfect indoor-outdoor living. The master suite provides a luxurious retreat with direct lanai access, a spacious bath, and a walk-in closet. With flexible customization options, including a versatile flex room and ICI Homes' signature upgrades, the Nina is ready to become the home you've dreamed of.

* Renderings may vary from actual home. Please see disclaimer for more details.

\$2,259

ESTIMATED SAVINGS



This home has a HERS Score of 67 and is estimated to save you \$2,259 on your annual utility bills vs. a resale home.

THE NINA

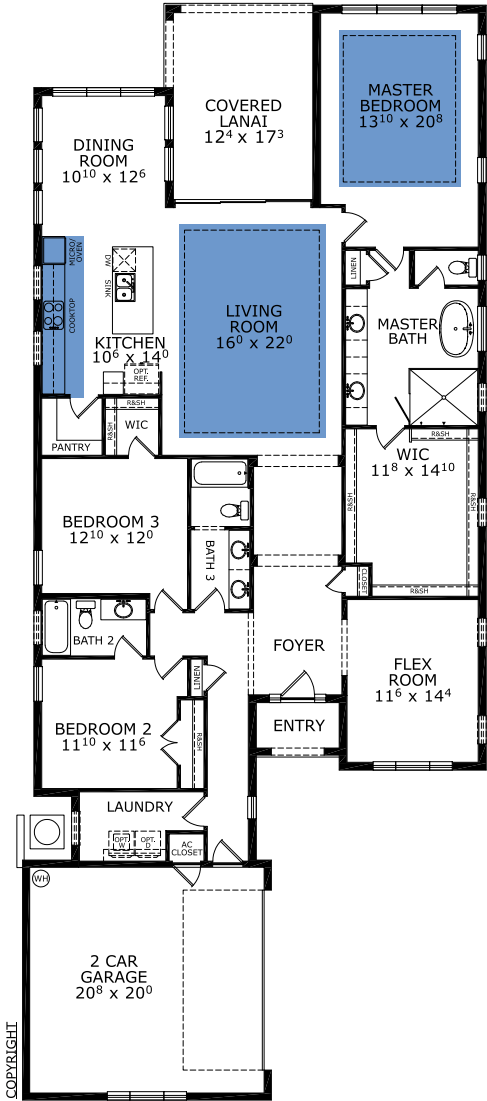
3 Bedrooms • 3 Bathrooms • 2-Car Garage

Veranda Bay
Flagler Beach, FL

Available in
Veranda Bay 50 OYL

Living Area: 2,520 ft² Under Roof: 3,232 ft²

FIRST FLOOR



Floor Plan Comparison Tool

Close

Customize this plan, it's easy! (844) 349-6401 or visit [ICIHomes.com](https://www.icihomes.com)

include lot premiums, upgrades, and options. Inventory home completion date may vary. All prices subject to change without notice. All plans are property of ICI Homes and cannot be copied or used without permission. Prices, promotions, incentives, features, options, amenities, floor plans, elevations, site maps, designs, materials, and dimensions are for illustrative purposes only and subject to change without notice. Plans should not be relied upon as representation express or implied of final sizes, locations, features or dimensions. Square footage and dimensions are estimated and may vary from description. All HERS ratings and savings are calculated by a third party energy rating service. Actual savings will depend on a number of factors, including but not limited to daily activities, home maintenance practices, household size, use of appliances, lighting and internal climate control systems, lot orientation, and surrounding climate and weather conditions. **Created on 01/28/2026:** _____ **Garage Orientation R / L:** _____

