



THE PALOS VERDES at AMELIA NATIONAL

THE PALOS VERDES - COASTAL MODERN

4 Bedrooms • 3.5 Bathrooms • 3-Car Garage • 3,196 ft² Living Area • 4,001 ft² Under Roof

The Palos Verdes floor plan combines elegance and everyday functionality in a beautifully open design. A grand foyer with a two-story ceiling welcomes you, leading into an inviting living room that flows effortlessly into the dining area and gourmet kitchen. The main-floor master suite offers a luxurious retreat, complete with a spa-like bath. Outside, a covered lanai extends your living space, perfect for gatherings or quiet relaxation. Upstairs, a game room and three additional bedrooms with walk-in closets ensure ample space for family and guests. With ICI Homes' customization options, make the Palos Verdes truly your own.

* Renderings may vary from actual home. Please see disclaimer for more details.

\$2,924

ESTIMATED SAVINGS



This home has a HERS Score of 60 and is estimated to save you \$2,924 on your annual utility bills vs. a resale home.

THE PALOS VERDES

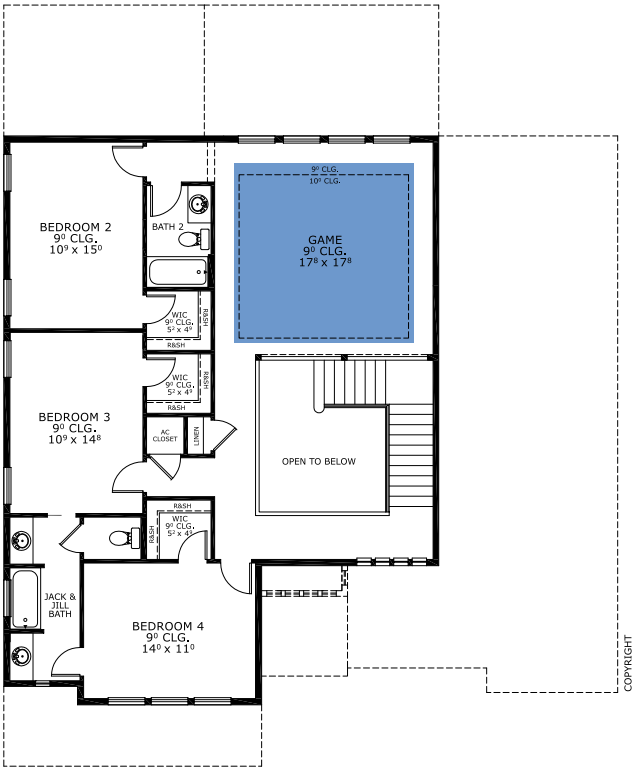
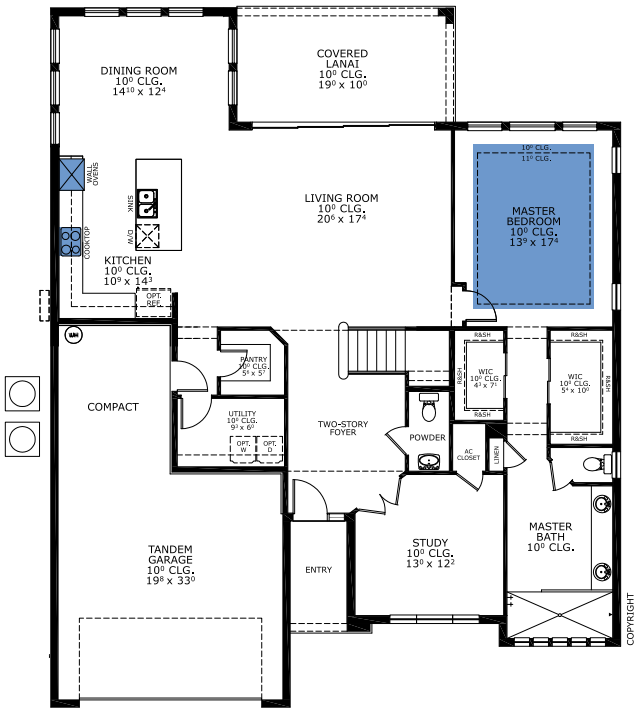
4 Bedrooms • 3.5 Bathrooms • 3-Car Garage

Amelia National Available in
Fernandina Beach, FL Amelia National 60

Living Area: 3,196 ft² Under Roof: 4,001 ft²



FIRST-SECOND FLOOR



Floor Plan Comparison Tool

Close

Customize this plan, it's easy! (844) 349-6401 or visit [ICIHomes.com](https://www.icihomes.com)

include lot premiums, upgrades, and options. Inventory home completion date may vary. All prices subject to change without notice. All plans are property of ICI Homes and cannot be copied or used without permission. Prices, promotions, incentives, features, options, amenities, floor plans, elevations, site maps, designs, materials, and dimensions are for illustrative purposes only and subject to change without notice. Plans should not be relied upon as representation express or implied of final sizes, locations, features or dimensions. Square footage and dimensions are estimated and may vary from description. All HERS ratings and savings are calculated by a third party energy rating service. Actual savings will depend on a number of factors, including but not limited to daily activities, home maintenance practices, household size, use of appliances, lighting and internal climate control systems, lot orientation, and surrounding climate and weather conditions. **Created on 01/28/2026:** _____ **Garage Orientation R / L:** _____

