



## THE PALOS VERDES at OAKMONT

THE PALOS VERDES - COASTAL MODERN

QUICK MOVE IN

**4 Bedrooms • 3.5 Bathrooms • 3-Car Garage • 3,196 ft<sup>2</sup> Living Area • 4,001 ft<sup>2</sup> Under Roof**

The Palos Verdes floor plan combines elegance and everyday functionality in a beautifully open design. A grand foyer with a two-story ceiling welcomes you, leading into an inviting living room that flows effortlessly into the dining area and gourmet kitchen. The main-floor master suite offers a luxurious retreat, complete with a spa-like bath. Outside, a covered lanai extends your living space, perfect for gatherings or quiet relaxation. Upstairs, a game room and three additional bedrooms with walk-in closets ensure ample space for family and guests. With ICI Homes' customization options, make the Palos Verdes truly your own.

\* Renderings may vary from actual home. Please see disclaimer for more details.

**\$2,924**

ESTIMATED SAVINGS



This home has a HERS Score of 60 and is estimated to save you \$2,924 on your annual utility bills vs. a resale home.

# THE PALOS VERDES

4 Bedrooms • 3.5 Bathrooms • 3-Car Garage

QUICK MOVE IN

## Oakmont

Elite Series | 65' Wide Lots - Lot 704

3602 SW 118th Drive  
Gainesville, FL, 32608

Living Area: 3,196 ft<sup>2</sup>

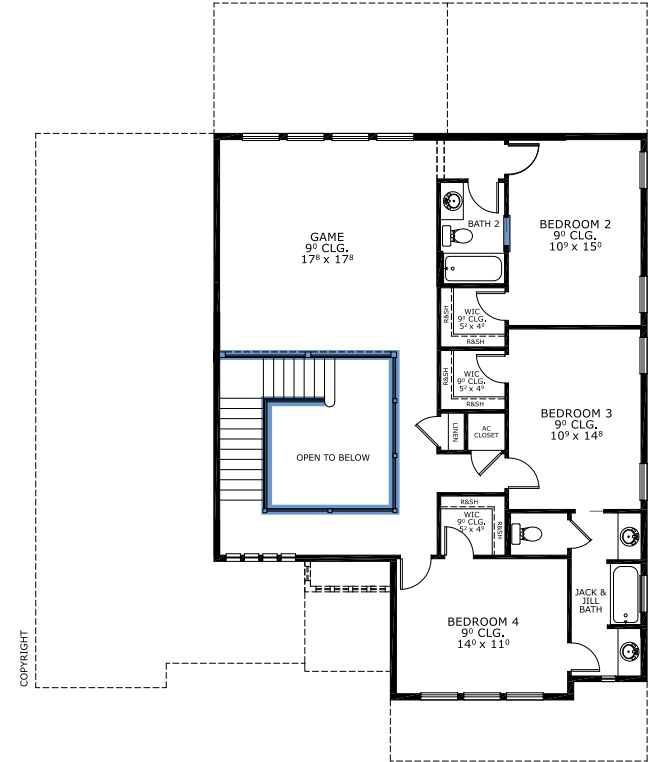
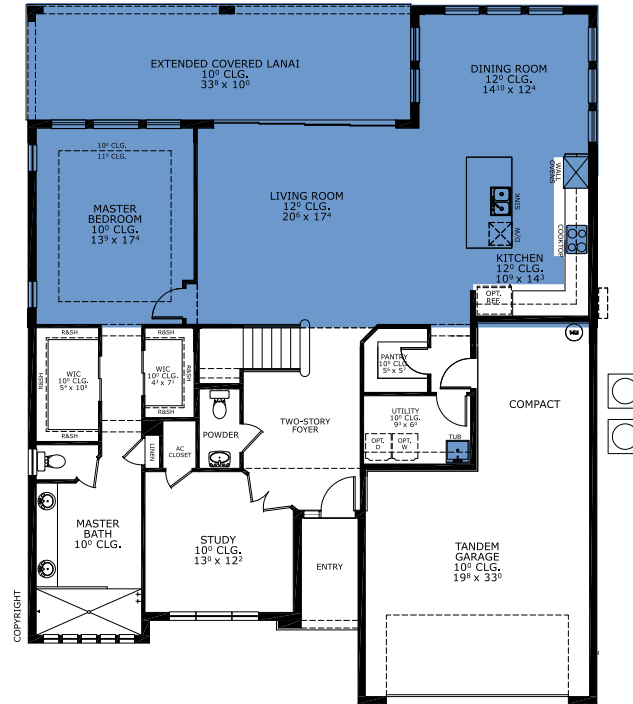
### Structural Options Included in This Home:

- ✓ Kitchen Deluxe - NFD
- ✓ Extended Covered Lanai
- ✓ Summer Kitchen Rough In w/o Hood
- ✓ Summer Kitchen-Knee Wall Only per LF
- ✓ Ceiling 12 @ Kitchen/Living/Dining
- ✓ Tray Ceiling - Master Suite
- ✓ Pocket Door
- ✓ Railing ilo Knee Wall
- ✓ Laundry Sink-Rough In
- ✓ Tray at Dining Room

And much more....

Priced at: **\$877,725**

## FIRST-SECOND FLOOR



Floor Plan Comparison Tool

Close

This Palos Verdes is a Quick Move In! [Speak to a Sales Counselor \(844\) 349-6401](#) or visit [ICIHomes.com](#)

include lot premiums, upgrades, and options. Inventory home completion date may vary. All prices subject to change without notice. All plans are property of ICI Homes and cannot be copied or used without permission. Prices, promotions, incentives, features, options, amenities, floor plans, elevations, site maps, designs, materials, and dimensions are for illustrative purposes only and subject to change without notice. Plans should not be relied upon as representation express or implied of final sizes, locations, features or dimensions. Square footage and dimensions are estimated and may vary from description. All HERS ratings and savings are calculated by a third party energy rating service. Actual savings will depend on a number of factors, including but not limited to daily activities, home maintenance practices, household size, use of appliances, lighting and internal climate control systems, lot orientation, and surrounding climate and weather conditions. **Created on 01/28/2026:** \_\_\_\_\_ **Garage Orientation R / L:** \_\_\_\_\_

