



THE PABLO at SEVEN PINES

THE PABLO - COASTAL

4 Bedrooms • 3.5 Bathrooms • 3-Car Garage • 3,156 ft² Living Area • 4,123 ft² Under Roof

The Pablo floor plan is designed for those who appreciate a spacious and flexible home. The two-story foyer opens into an expansive living room that flows into the dining and kitchen areas, creating a perfect layout for entertaining. The first-floor master suite offers a private retreat with a luxurious bath, including a freestanding tub and walk-in closet. Upstairs, a game room and three additional bedrooms with walk-in closets provide space for family and guests. With ICI Homes' customization options, you can truly make this home your own, adding the personal touches that fit your unique lifestyle.

* Renderings may vary from actual home. Please see disclaimer for more details.

\$3,103

ESTIMATED SAVINGS



This home has a HERS Score of 62 and is estimated to save you \$3,103 on your annual utility bills vs. a resale home.

THE PABLO

4 Bedrooms • 3.5 Bathrooms • 3-Car Garage

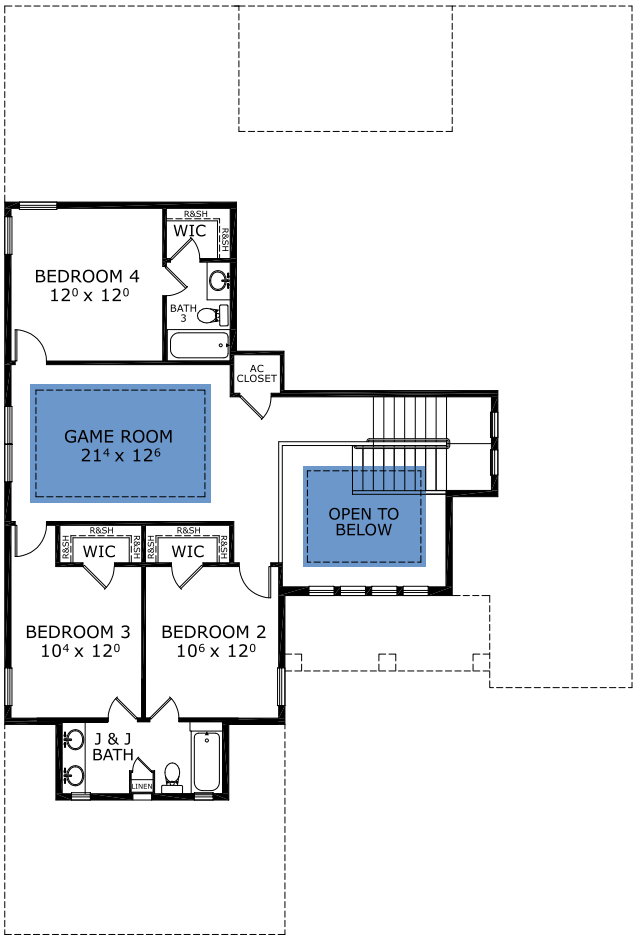
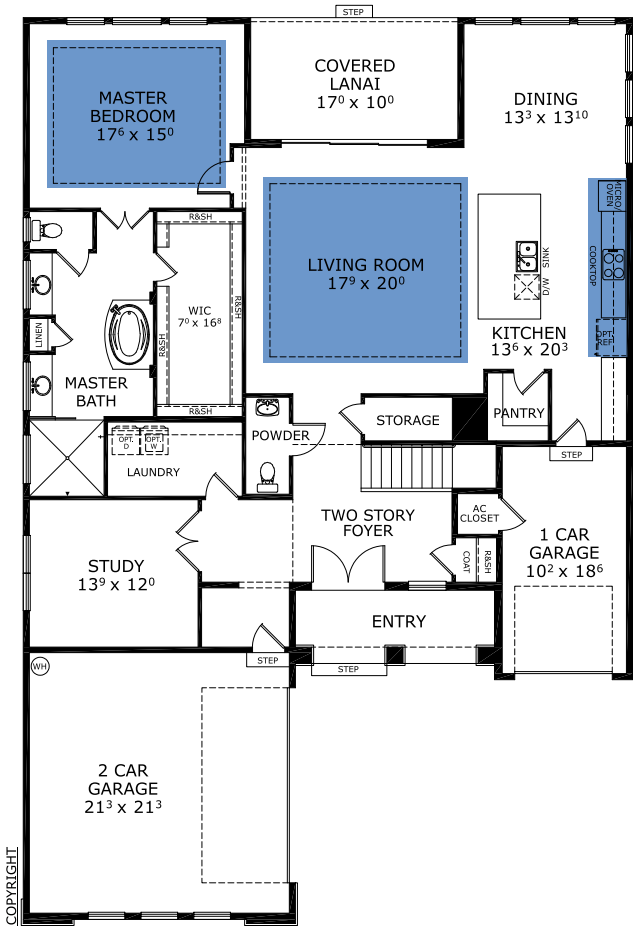
Seven Pines
Jacksonville, FL

Available in
Seven Pines 60 FL

Living Area: 3,156 ft² Under Roof: 4,123 ft²



FIRST-SECOND FLOOR



Floor Plan Comparison Tool

Close

Customize this plan, it's easy! (844) 349-6401 or visit [ICIHomes.com](https://www.ICIHomes.com)

include lot premiums, upgrades, and options. Inventory home completion date may vary. All prices subject to change without notice. All plans are property of ICI Homes and cannot be copied or used without permission. Prices, promotions, incentives, features, options, amenities, floor plans, elevations, site maps, designs, materials, and dimensions are for illustrative purposes only and subject to change without notice. Plans should not be relied upon as representation express or implied of final sizes, locations, features or dimensions. Square footage and dimensions are estimated and may vary from description. All HERS ratings and savings are calculated by a third party energy rating service. Actual savings will depend on a number of factors, including but not limited to daily activities, home maintenance practices, household size, use of appliances, lighting and internal climate control systems, lot orientation, and surrounding climate and weather conditions. **Created on 01/28/2026:** _____ **Garage Orientation R / L:** _____

