



THE SANTA MARIA at WOODHAVEN

THE SANTA MARIA - COASTAL

MODEL

4 Bedrooms • 3.5 Bathrooms • 3-Car Garage • 2,933 ft² Living Area • 3,928 ft² Under Roof

The Santa Maria is a 2,912-square-foot design perfect for families, with four bedrooms, three and a half baths, and a three-car garage. The grand living room with 12-foot ceilings opens to a deluxe kitchen and dining area, flowing out to a covered lanai ideal for entertaining. A private master suite on the main floor offers a peaceful retreat, while upstairs, three more bedrooms and a game room create a haven for family fun. Customizable options—like a guest suite, extended lanai, and deluxe bath features—ensure this home can be tailored perfectly to your lifestyle.

* Renderings may vary from actual home. Please see disclaimer for more details.

\$2,744

ESTIMATED SAVINGS



This home has a HERS Score of 58 and is estimated to save you \$2,744 on your annual utility bills vs. a resale home.

THE SANTA MARIA

4 Bedrooms • 3.5 Bathrooms • 3-Car Garage

MODEL

Woodhaven

Classic Series | 50' Wide Lots - Lot 038

6402 Highfield Village
Port Orange, FL, 32128

Living Area: 2,933 ft²

Structural Options Included in This Home:

- ✓ Deluxe Master Bath 2
- ✓ Kitchen Alternative
- ✓ Kitchen Deluxe Deluxe Kitchen Includes - Cooktop ilo of freestanding range, single wall oven, upgraded microwave over cooktop, upgr
- ✓ Extended Covered Lanai
- ✓ Window Seat @ Master Suite
- ✓ Window Addition
- ✓ Summer Kitchen 9 w/Hood **Please see attached signed spec sheet provided by sales agent**
- ✓ Ceiling 12 @ Living Room
- ✓ Sliding Glass Door 12 Pocket
- ✓ Tray Ceiling - Game Room
- ✓ Tray Ceiling - Lanai
- ✓ Tray Ceiling - Master Suite
- ✓ Outlet-Floor/Brass Cover
- ✓ Railing ilo Knee Wall

And much more....

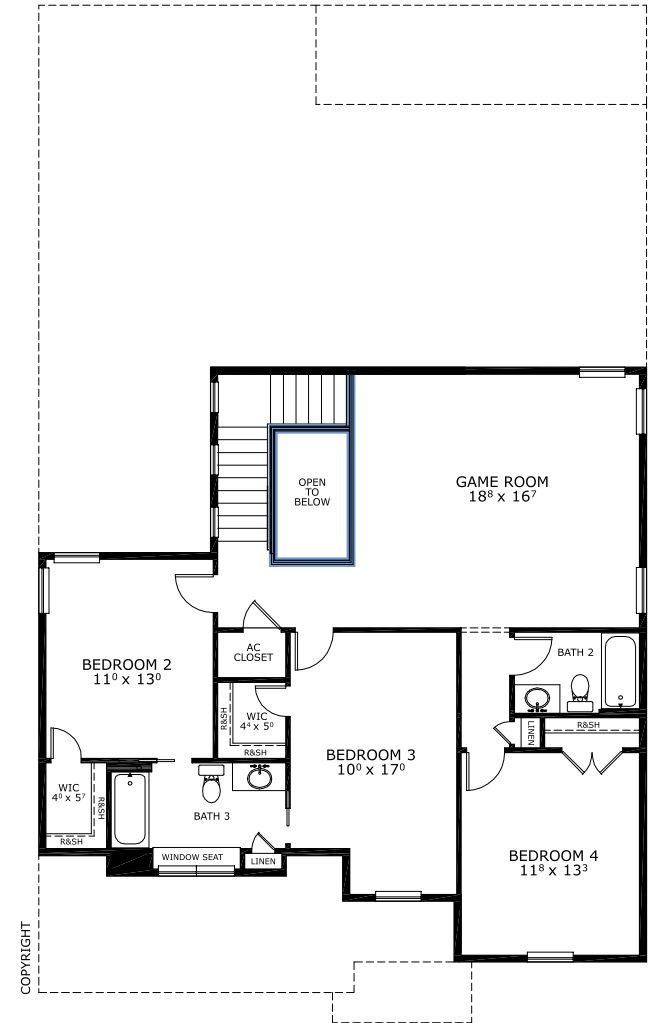
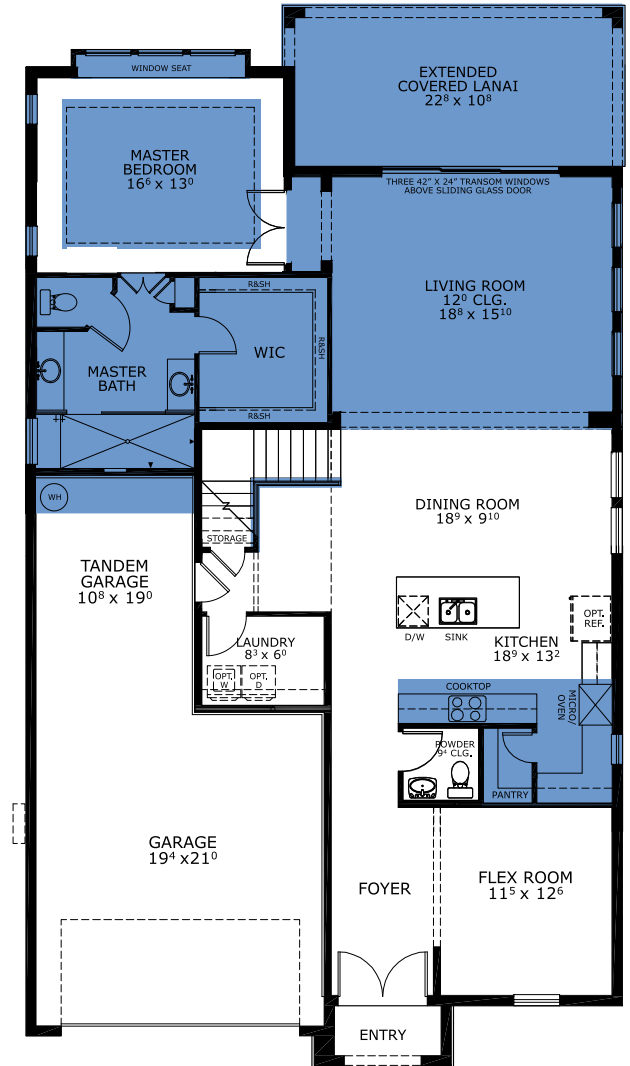
From: **\$680,900**

Floor Plan Comparison Tool

Close

This Santa Maria is a Model! [Speak to a Sales Counselor \(844\) 349-6401](#) or visit [ICIHomes.com](#)

FIRST-SECOND FLOOR



include lot premiums, upgrades, and options. Inventory home completion date may vary. All prices subject to change without notice. All plans are property of ICI Homes and cannot be copied or used without permission. Prices, promotions, incentives, features, options, amenities, floor plans, elevations, site maps, designs, materials, and dimensions are for illustrative purposes only and subject to change without notice. Plans should not be relied upon as representation express or implied of final sizes, locations, features or dimensions. Square footage and dimensions are estimated and may vary from description. All HERS ratings and savings are calculated by a third party energy rating service. Actual savings will depend on a number of factors, including but not limited to daily activities, home maintenance practices, household size, use of appliances, lighting and internal climate control systems, lot orientation, and surrounding climate and weather conditions. **Created on 01/28/2026:** _____ **Garage Orientation R / L:** _____

