



THE SERENA II at VERANDA BAY

THE WEST INDIES

3 Bedrooms • 2.5 Bathrooms • 3-Car Garage • 2,258 ft² Living Area • 3,036 ft² Under Roof

The Serena II floor plan, spanning 2,256 square feet, offers an open layout for comfortable living and entertaining. The heart of the home is an airy living room, dining area, and deluxe kitchen that opens to a covered lanai, ideal for Florida's indoor-outdoor lifestyle. The private master suite features a spa-like bath and expansive walk-in closet, creating a serene retreat. Two additional bedrooms share a bath near a versatile flex room. With ICI Homes' renowned customization, you can transform the Serena II to suit your family's unique needs, from layout tweaks to outdoor enhancements.

* Renderings may vary from actual home. Please see disclaimer for more details.

\$2,267

ESTIMATED SAVINGS



This home has a HERS Score of 62 and is estimated to save you \$2,267 on your annual utility bills vs. a resale home.

THE SERENA II

3 Bedrooms • 2.5 Bathrooms • 3-Car Garage

Veranda Bay
Flagler Beach, FL

Available in
Veranda Bay 50 OYL

Living Area: 2,258 ft² Under Roof: 3,036 ft²

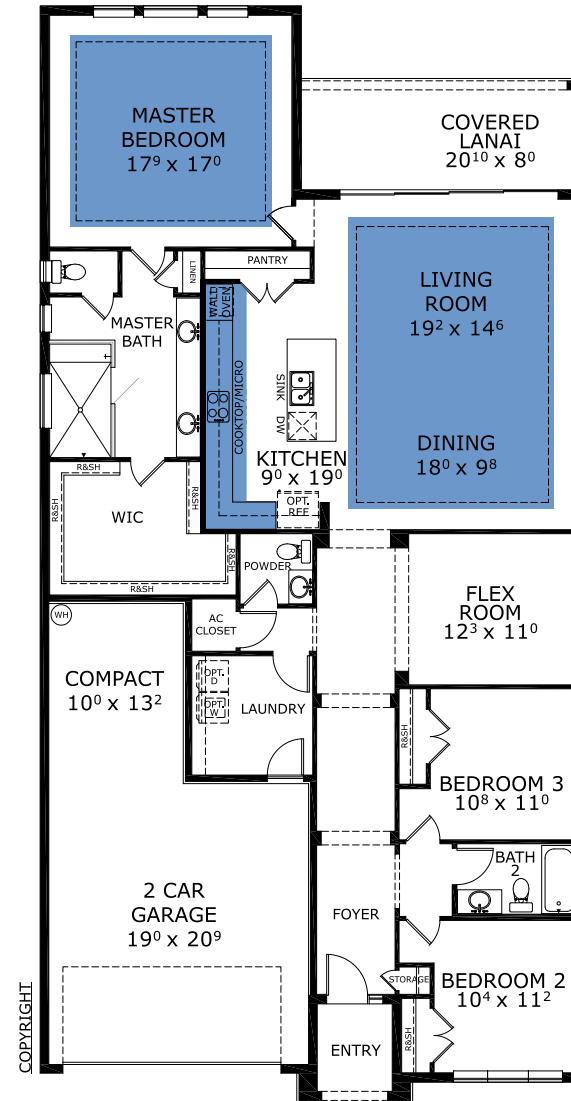
THE CRAFTSMAN MODERN - TILE



THE FARMHOUSE MODERN - TILE



FIRST FLOOR



Floor Plan Comparison Tool

Close

Customize this plan, it's easy! (844) 349-6401 or visit ICIHomes.com

include lot premiums, upgrades, and options. Inventory home completion date may vary. All prices subject to change without notice. All plans are property of ICI Homes and cannot be copied or used without permission. Prices, promotions, incentives, features, options, amenities, floor plans, elevations, site maps, designs, materials, and dimensions are for illustrative purposes only and subject to change without notice. Plans should not be relied upon as representation express or implied of final sizes, locations, features or dimensions. Square footage and dimensions are estimated and may vary from description. All HERS ratings and savings are calculated by a third party energy rating service. Actual savings will depend on a number of factors, including but not limited to daily activities, home maintenance practices, household size, use of appliances, lighting and internal climate control systems, lot orientation, and surrounding climate and weather conditions. **Created on 01/28/2026:** _____ **Garage Orientation R / L:** _____

