



THE SERENA at LAKE JOVITA

THE SERENA - SPANISH

4 Bedrooms • 3 Bathrooms • 2-Car Garage • 2,217 ft² Living Area • 2,929 ft² Under Roof

The Serena floor plan is a single-level retreat that combines luxury and functionality in 2,217 square feet. This 4-bedroom, 3-bath home features an open-concept living area, where a stunning kitchen with a large island flows seamlessly into a spacious dining and living room. Step out onto the covered lanai, perfect for outdoor relaxation. The private master suite boasts a spa-like bathroom and walk-in closet, while other bedrooms offer privacy and comfort. A dedicated study with French doors adds flexibility, ideal for a home office. With ICI Homes, you can customize every detail, from ceilings to finishes, creating a home that perfectly reflects your style.

* Renderings may vary from actual home. Please see disclaimer for more details.

\$2,231

ESTIMATED SAVINGS



This home has a HERS Score of 59 and is estimated to save you \$2,231 on your annual utility bills vs. a resale home.

THE SERENA

4 Bedrooms • 3 Bathrooms • 2-Car Garage

Lake Jovita

Available in

Dade City, FL

Lake Jovita 66

Living Area: 2,217 ft² Under Roof: 2,929 ft²

THE MEDITERRANEAN



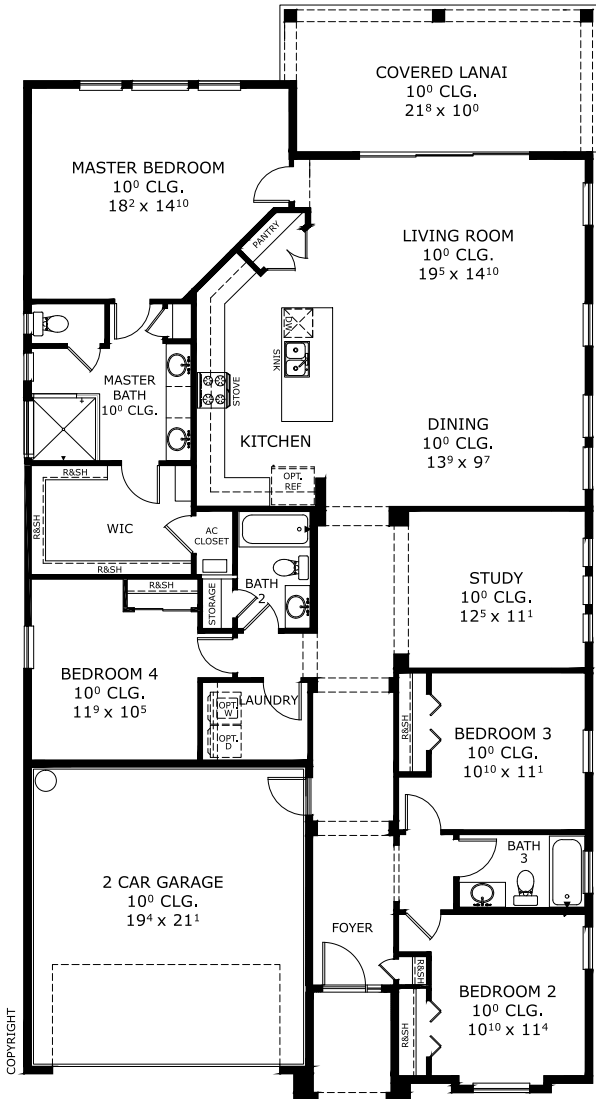
THE TUSCAN



THE WEST INDIES



FIRST FLOOR



Floor Plan Comparison Tool

Close

Customize this plan, it's easy! (844) 349-6401 or visit ICIHomes.com

include lot premiums, upgrades, and options. Inventory home completion date may vary. All prices subject to change without notice. All plans are property of ICI Homes and cannot be copied or used without permission. Prices, promotions, incentives, features, options, amenities, floor plans, elevations, site maps, designs, materials, and dimensions are for illustrative purposes only and subject to change without notice. Plans should not be relied upon as representation express or implied of final sizes, locations, features or dimensions. Square footage and dimensions are estimated and may vary from description. All HERS ratings and savings are calculated by a third party energy rating service. Actual savings will depend on a number of factors, including but not limited to daily activities, home maintenance practices, household size, use of appliances, lighting and internal climate control systems, lot orientation, and surrounding climate and weather conditions. **Created on 01/28/2026:** _____ **Garage Orientation R / L:** _____

