



THE VIOLET at OAKMONT

THE COASTAL MODERN

3 Bedrooms • 2 Bathrooms • 2-Car Garage • 1,841 ft² Living Area • 2,477 ft² Under Roof

The Violet floor plan is a charming 1,841 sq ft home that blends comfort and style in a thoughtfully designed layout. Featuring three bedrooms, two bathrooms, and a seamless open-concept living area, this home is perfect for both relaxation and entertaining. The gourmet kitchen flows into the dining and living rooms, creating an inviting central space. A private master suite offers a luxurious retreat with dual walk-in closets and a spa-inspired bath. With a covered lanai and ICI Homes' customization options, the Violet can be tailored to your unique lifestyle and preferences.

* Renderings may vary from actual home. Please see disclaimer for more details.

\$2,301

ESTIMATED SAVINGS



This home has a HERS Score of 59 and is estimated to save you \$2,301 on your annual utility bills vs. a resale home.

THE VIOLET

3 Bedrooms • 2 Bathrooms • 2-Car Garage

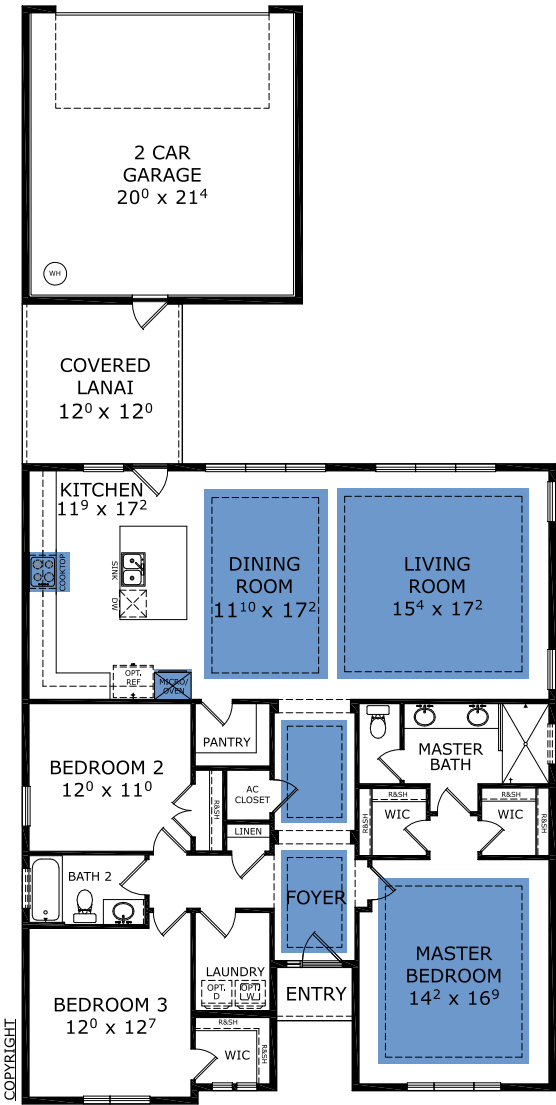
Oakmont
Gainesville, FL

Available in
Oakmont 50 RL

Living Area: 1,841 ft² **Under Roof:** 2,477 ft²



FIRST FLOOR



Floor Plan Comparison Tool

Close

Customize this plan, it's easy! (844) 349-6401 or visit [ICIHomes.com](https://www.ICIHomes.com)

include lot premiums, upgrades, and options. Inventory home completion date may vary. All prices subject to change without notice. All plans are property of ICI Homes and cannot be copied or used without permission. Prices, promotions, incentives, features, options, amenities, floor plans, elevations, site maps, designs, materials, and dimensions are for illustrative purposes only and subject to change without notice. Plans should not be relied upon as representation express or implied of final sizes, locations, features or dimensions. Square footage and dimensions are estimated and may vary from description. All HERS ratings and savings are calculated by a third party energy rating service. Actual savings will depend on a number of factors, including but not limited to daily activities, home maintenance practices, household size, use of appliances, lighting and internal climate control systems, lot orientation, and surrounding climate and weather conditions. **Created on 01/28/2026:** _____ **Garage Orientation R / L:** _____

